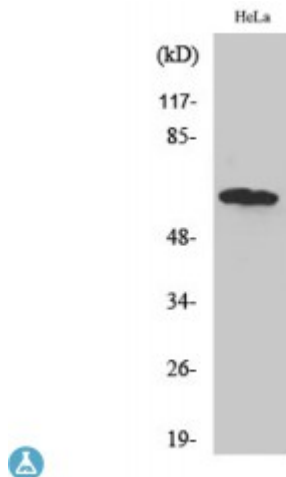


## Anti-TBC1D3A/B/C antibody



<b>Description</b>	Rabbit polyclonal to TBC1D3A/B/C.
<b>Model</b>	STJ95924
<b>Host</b>	Rabbit
<b>Reactivity</b>	Human
<b>Applications</b>	ELISA, WB
<b>Immunogen</b>	Synthesized peptide derived from human TBC1D3A/B/C
<b>Immunogen Region</b>	450-530 aa, C-terminal
<b>Gene ID</b>	<a href="#">414060</a>
<b>Gene Symbol</b>	<a href="#">TBC1D3C</a>
<b>Dilution range</b>	WB 1:500-1:2000ELISA 1:20000
<b>Specificity</b>	TBC1D3A/B/C Polyclonal Antibody detects endogenous levels of TBC1D3A/B/C protein.
<b>Tissue Specificity</b>	Expressed in pancreas, thymus and testis.
<b>Purification</b>	The antibody was affinity-purified from rabbit antiserum by affinity-chromatography using epitope-specific immunogen.
<b>Note</b>	For Research Use Only (RUO).
<b>Protein Name</b>	TBC1 domain family member 3 Prostate cancer gene 17 protein Protein TRE17-alpha Rab GTPase-activating protein PRC17
<b>Molecular Weight</b>	62 kDa
<b>Clonality</b>	Polyclonal

<b>Conjugation</b>	Unconjugated
<b>Isotype</b>	IgG
<b>Formulation</b>	Liquid in PBS containing 50% glycerol, 0.5% BSA and 0.02% sodium azide.
<b>Concentration</b>	1 mg/ml
<b>Storage Instruction</b>	Store at -20°C, and avoid repeat freeze-thaw cycles.
<b>Database Links</b>	<a href="#">HGNC:19031OMIM:607741</a>
<b>Alternative Names</b>	TBC1 domain family member 3 Prostate cancer gene 17 protein Protein TRE17-alpha Rab GTPase-activating protein PRC17
<b>Function</b>	Acts as a GTPase activating protein for RAB5. Does not act on RAB4 or RAB11 .
<b>Cellular Localization</b>	Cell membrane. Associated with lipid rafts.
<b>Post-translational Modifications</b>	Ubiquitinated by a CUL7-based E3 ligase, which leads to proteasomal degradation. Palmitoylation is required for membrane localization and protects TBC1D3 from ubiquitination.

---

**St John's Laboratory Ltd**

**F** +44 (0)207 681 2580  
**T** +44 (0)208 223 3081

**W** <http://www.stjohnslabs.com/>  
**E** [info@stjohnslabs.com](mailto:info@stjohnslabs.com)