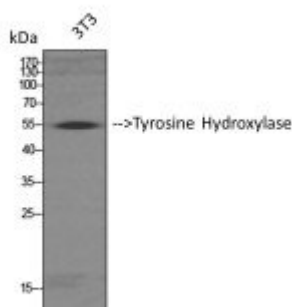


Anti-TH antibody



Description	Rabbit polyclonal to TH.
Model	STJ96003
Host	Rabbit
Reactivity	Human, Mouse, Rat
Applications	ELISA, IF, IHC, WB
Immunogen	Synthesized peptide derived from human TH around the non-phosphorylation site of S19.
Immunogen Region	10-90 aa
Gene ID	7054
Gene Symbol	TH
Dilution range	WB 1:500-1:2000IHC 1:100-1:300IF 1:200-1:1000ELISA 1:10000
Specificity	TH Polyclonal Antibody detects endogenous levels of TH protein.
Tissue Specificity	Mainly expressed in the brain and adrenal glands.
Purification	The antibody was affinity-purified from rabbit antiserum by affinity-chromatography using epitope-specific immunogen.
Note	For Research Use Only (RUO).
Protein Name	Tyrosine 3-monooxygenase Tyrosine 3-hydroxylase TH
Molecular Weight	49/56 kDa
Clonality	Polyclonal

Conjugation	Unconjugated
Isotype	IgG
Formulation	Liquid in PBS containing 50% glycerol, 0.5% BSA and 0.02% sodium azide.
Concentration	1 mg/ml
Storage Instruction	Store at -20°C, and avoid repeat freeze-thaw cycles.
Database Links	HGNC:11782OMIM:191290
Alternative Names	Tyrosine 3-monooxygenase Tyrosine 3-hydroxylase TH
Function	Plays an important role in the physiology of adrenergic neurons.

St John's Laboratory Ltd

F +44 (0)207 681 2580

T +44 (0)208 223 3081

W <http://www.stjohnslabs.com/>

E info@stjohnslabs.com