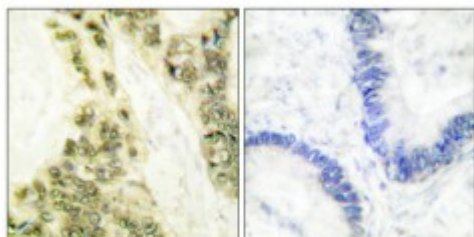


Anti-T alpha antibody



Description	Rabbit polyclonal to TRalpha.
Model	STJ96120
Host	Rabbit
Reactivity	Human, Mouse, Rat
Applications	ELISA, IHC, WB
Immunogen	Synthesized peptide derived from human TRalpha
Immunogen Region	10-90 aa, N-terminal
Gene ID	7067
Gene Symbol	THRA
Dilution range	WB 1:500-1:2000IHC 1:100-1:300ELISA 1:10000
Specificity	TRalpha Polyclonal Antibody detects endogenous levels of TRalpha protein.
Purification	The antibody was affinity-purified from rabbit antiserum by affinity-chromatography using epitope-specific immunogen.
Note	For Research Use Only (RUO).
Protein Name	Thyroid hormone receptor alpha Nuclear receptor subfamily 1 group A member 1 V-erbA-related protein 7 EAR-7 c-erbA-1 c-erbA-alpha
Molecular Weight	55 kDa
Clonality	Polyclonal
Conjugation	Unconjugated

Isotype	IgG
Formulation	Liquid in PBS containing 50% glycerol, 0.5% BSA and 0.02% sodium azide.
Concentration	1 mg/ml
Storage Instruction	Store at -20°C, and avoid repeat freeze-thaw cycles.
Database Links	HGNC:11796 OMIM:190120
Alternative Names	Thyroid hormone receptor alpha Nuclear receptor subfamily 1 group A member 1 V-erbA-related protein 7 EAR-7 c-erbA-1 c-erbA-alpha
Function	Isoform Alpha-1: Nuclear hormone receptor that can act as a repressor or activator of transcription. High affinity receptor for thyroid hormones, including triiodothyronine and thyroxine. Isoform Alpha-2: Does not bind thyroid hormone and functions as a weak dominant negative inhibitor of thyroid hormone action.
Sequence and Domain Family	Composed of three domains: a modulating N-terminal domain, a DNA-binding domain and a C-terminal ligand-binding domain.
Cellular Localization	Nucleus.

St John's Laboratory Ltd

F +44 (0)207 681 2580

T +44 (0)208 223 3081

W <http://www.stjohnslabs.com/>

E info@stjohnslabs.com