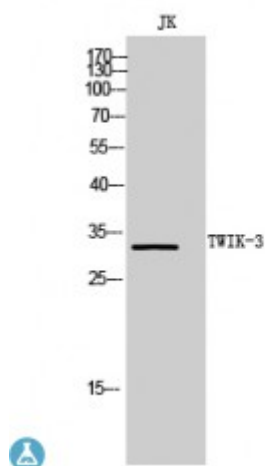


Anti-TWIK-3 antibody



Description	Rabbit polyclonal to TWIK-3.
Model	STJ96153
Host	Rabbit
Reactivity	Human
Applications	ELISA, WB
Immunogen	Synthesized peptide derived from human TWIK-3
Immunogen Region	170-250 aa, C-terminal
Gene ID	10089
Gene Symbol	KCNK7
Dilution range	WB 1:500-1:2000ELISA 1:40000
Specificity	TWIK-3 Polyclonal Antibody detects endogenous levels of TWIK-3 protein.
Purification	The antibody was affinity-purified from rabbit antiserum by affinity-chromatography using epitope-specific immunogen.
Note	For Research Use Only (RUO).
Protein Name	Potassium channel subfamily K member 7
Molecular Weight	32 kDa
Clonality	Polyclonal
Conjugation	Unconjugated
Isotype	IgG

Formulation	Liquid in PBS containing 50% glycerol, 0.5% BSA and 0.02% sodium azide.
Concentration	1 mg/ml
Storage Instruction	Store at -20°C, and avoid repeat freeze-thaw cycles.
Database Links	HGNC:6282OMIM:603940
Alternative Names	Potassium channel subfamily K member 7
Function	Probable potassium channel subunit. No channel activity observed in vitro as protein remains in the endoplasmic reticulum. May need to associate with an as yet unknown partner in order to reach the plasma membrane.
Cellular Localization	Membrane

St John's Laboratory Ltd

F +44 (0)207 681 2580
T +44 (0)208 223 3081

W <http://www.stjohnslabs.com/>
E info@stjohnslabs.com