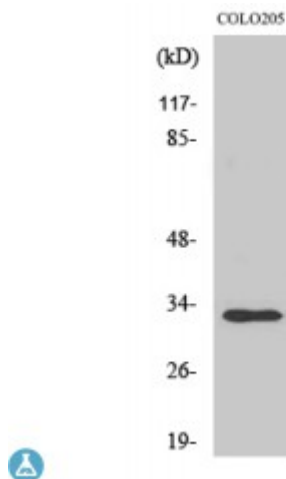


Anti-UBCE7IP4 antibody



Description	Rabbit polyclonal to UBCE7IP4.
Model	STJ96161
Host	Rabbit
Reactivity	Human, Mouse
Applications	ELISA, WB
Immunogen	Synthesized peptide derived from human UBCE7IP4
Immunogen Region	120-200 aa, Internal
Gene ID	9781
Gene Symbol	RNF144A
Dilution range	WB 1:500-1:2000ELISA 1:40000
Specificity	UBCE7IP4 Polyclonal Antibody detects endogenous levels of UBCE7IP4 protein.
Purification	The antibody was affinity-purified from rabbit antiserum by affinity-chromatography using epitope-specific immunogen.
Note	For Research Use Only (RUO).
Protein Name	E3 ubiquitin-protein ligase RNF144A RING finger protein 144A UbcM4-interacting protein 4 Ubiquitin-conjugating enzyme 7-interacting protein 4
Molecular Weight	30 kDa
Clonality	Polyclonal
Conjugation	Unconjugated

Isotype	IgG
Formulation	Liquid in PBS containing 50% glycerol, 0.5% BSA and 0.02% sodium azide.
Concentration	1 mg/ml
Storage Instruction	Store at -20°C, and avoid repeat freeze-thaw cycles.
Database Links	HGNC:20457 OMIM:NA
Alternative Names	E3 ubiquitin-protein ligase RNF144A RING finger protein 144A UbcM4-interacting protein 4 Ubiquitin-conjugating enzyme 7-interacting protein 4
Function	E3 ubiquitin-protein ligase which accepts ubiquitin from E2 ubiquitin-conjugating enzymes UBE2L3 and UBE2L6 in the form of a thioester and then directly transfers the ubiquitin to targeted substrates. Mediates the ubiquitination and degradation of the DNA damage kinase PRKDC.
Sequence and Domain Family	Members of the RBR family are atypical E3 ligases. They interact with the E2 conjugating enzyme UBE2L3 and function like HECT-type E3 enzymes: they bind E2s via the first RING domain, but require an obligate trans-thiolation step during the ubiquitin transfer, requiring a conserved cysteine residue in the second RING domain.
Cellular Localization	Cell membrane Cytoplasmic vesicle membrane
Post-translational Modifications	Autoubiquitinated.