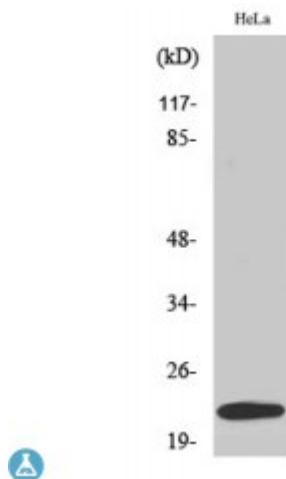


Anti-UBE2T antibody



Description	Rabbit polyclonal to UBE2T.
Model	STJ96165
Host	Rabbit
Reactivity	Human, Mouse
Applications	ELISA, WB
Immunogen	Synthesized peptide derived from human UBE2T
Immunogen Region	90-170 aa, Internal
Gene ID	29089
Gene Symbol	UBE2T
Dilution range	WB 1:500-1:2000ELISA 1:10000
Specificity	UBE2T Polyclonal Antibody detects endogenous levels of UBE2T protein.
Purification	The antibody was affinity-purified from rabbit antiserum by affinity-chromatography using epitope-specific immunogen.
Note	For Research Use Only (RUO).
Protein Name	Ubiquitin-conjugating enzyme E2 T Cell proliferation-inducing gene 50 protein E2 ubiquitin-conjugating enzyme T Ubiquitin carrier protein T Ubiquitin-protein ligase T
Molecular Weight	22 kDa
Clonality	Polyclonal
Conjugation	Unconjugated

Isotype	IgG
Formulation	Liquid in PBS containing 50% glycerol, 0.5% BSA and 0.02% sodium azide.
Concentration	1 mg/ml
Storage Instruction	Store at -20°C, and avoid repeat freeze-thaw cycles.
Database Links	HGNC:25009OMIM:610538
Alternative Names	Ubiquitin-conjugating enzyme E2 T Cell proliferation-inducing gene 50 protein E2 ubiquitin-conjugating enzyme T Ubiquitin carrier protein T Ubiquitin-protein ligase T
Function	Accepts ubiquitin from the E1 complex and catalyzes its covalent attachment to other proteins. Catalyzes monoubiquitination. Involved in mitomycin-C (MMC)-induced DNA repair: acts as a specific E2 ubiquitin-conjugating enzyme for the Fanconi anemia complex by associating with E3 ubiquitin-protein ligase FANCL and catalyzing monoubiquitination of FANCD2, a key step in the DNA damage pathway. Also mediates monoubiquitination of FANCL and FANCI. May contribute to ubiquitination and degradation of BRCA1. In vitro able to promote polyubiquitination using all 7 ubiquitin Lys residues, but may prefer 'Lys-11'-, 'Lys-27'-, 'Lys-48'- and 'Lys-63'-linked polyubiquitination.
Cellular Localization	Nucleus. Accumulates to chromatin.
Post-translational Modifications	Auto-ubiquitinated. Effects of auto-monoubiquitination at Lys-91 and Lys-182 are unclear: according to a report, monoubiquitination inactivates E2 enzyme activity . In contrast, according to another report, autoubiquitination does not affect E2 enzyme activity .