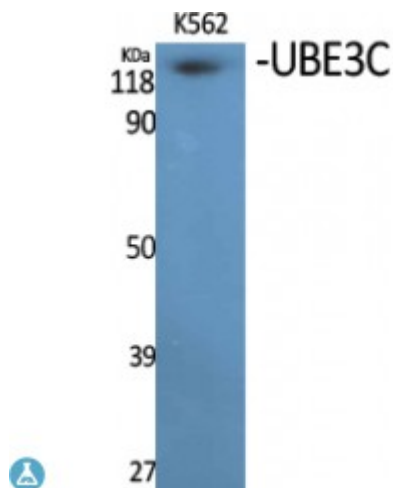


Anti-UBE3C antibody



Description	Rabbit polyclonal to UBE3C.
Model	STJ96167
Host	Rabbit
Reactivity	Human
Applications	ELISA, WB
Immunogen	Synthesized peptide derived from human UBE3C.
Immunogen Region	Internal
Gene ID	9690
Gene Symbol	UBE3C
Dilution range	WB 1:500-1:2000ELISA 1:10000
Specificity	UBE3C Polyclonal Antibody detects endogenous levels of UBE3C protein.
Tissue Specificity	Highly expressed in skeletal muscle. Detected at much lower levels in kidney and pancreas.
Purification	The antibody was affinity-purified from rabbit antiserum by affinity-chromatography using epitope-specific immunogen.
Note	For Research Use Only (RUO).
Protein Name	Ubiquitin-protein ligase E3C HECT-type ubiquitin transferase E3C HectH2
Molecular Weight	125 kDa
Clonality	Polyclonal

Conjugation	Unconjugated
Isotype	IgG
Formulation	Liquid in PBS containing 50% glycerol, 0.5% BSA and 0.02% sodium azide.
Concentration	1 mg/ml
Storage Instruction	Store at -20°C, and avoid repeat freeze-thaw cycles.
Database Links	HGNC:16803OMIM:614454
Alternative Names	Ubiquitin-protein ligase E3C HECT-type ubiquitin transferase E3C HectH2
Function	E3 ubiquitin-protein ligase that accepts ubiquitin from the E2 ubiquitin-conjugating enzyme UBE2D1 in the form of a thioester and then directly transfers the ubiquitin to targeted substrates. Can assemble unanchored poly-ubiquitin chains in either 'Lys-29'- or 'Lys-48'-linked polyubiquitin chains. Has preference for 'Lys-48' linkages. It can target itself for ubiquitination in vitro and may promote its own degradation in vivo.
Sequence and Domain Family	The C-terminal is necessary and sufficient for the poly-ubiquitin chain assembly.
Cellular Localization	Nucleus