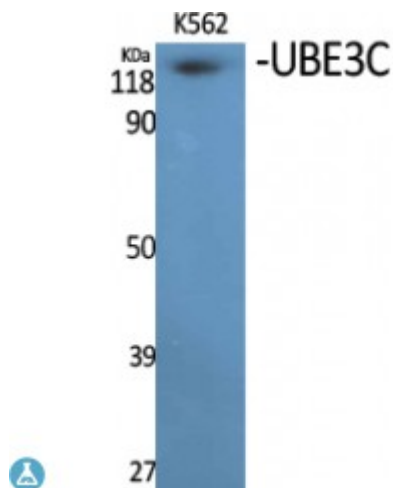


## Anti-UBE3C antibody



<b>Description</b>	Rabbit polyclonal to UBE3C.
<b>Model</b>	STJ96167
<b>Host</b>	Rabbit
<b>Reactivity</b>	Human
<b>Applications</b>	ELISA, WB
<b>Immunogen</b>	Synthesized peptide derived from human UBE3C.
<b>Immunogen Region</b>	Internal
<b>Gene ID</b>	<a href="#">9690</a>
<b>Gene Symbol</b>	<a href="#">UBE3C</a>
<b>Dilution range</b>	WB 1:500-1:2000ELISA 1:10000
<b>Specificity</b>	UBE3C Polyclonal Antibody detects endogenous levels of UBE3C protein.
<b>Tissue Specificity</b>	Highly expressed in skeletal muscle. Detected at much lower levels in kidney and pancreas.
<b>Purification</b>	The antibody was affinity-purified from rabbit antiserum by affinity-chromatography using epitope-specific immunogen.
<b>Note</b>	For Research Use Only (RUO).
<b>Protein Name</b>	Ubiquitin-protein ligase E3C HECT-type ubiquitin transferase E3C HectH2
<b>Molecular Weight</b>	125 kDa
<b>Clonality</b>	Polyclonal

<b>Conjugation</b>	Unconjugated
<b>Isotype</b>	IgG
<b>Formulation</b>	Liquid in PBS containing 50% glycerol, 0.5% BSA and 0.02% sodium azide.
<b>Concentration</b>	1 mg/ml
<b>Storage Instruction</b>	Store at -20°C, and avoid repeat freeze-thaw cycles.
<b>Database Links</b>	<a href="#">HGNC:16803OMIM:614454</a>
<b>Alternative Names</b>	Ubiquitin-protein ligase E3C HECT-type ubiquitin transferase E3C HectH2
<b>Function</b>	E3 ubiquitin-protein ligase that accepts ubiquitin from the E2 ubiquitin-conjugating enzyme UBE2D1 in the form of a thioester and then directly transfers the ubiquitin to targeted substrates. Can assemble unanchored poly-ubiquitin chains in either 'Lys-29'- or 'Lys-48'-linked polyubiquitin chains. Has preference for 'Lys-48' linkages. It can target itself for ubiquitination in vitro and may promote its own degradation in vivo.
<b>Sequence and Domain Family</b>	The C-terminal is necessary and sufficient for the poly-ubiquitin chain assembly.
<b>Cellular Localization</b>	Nucleus