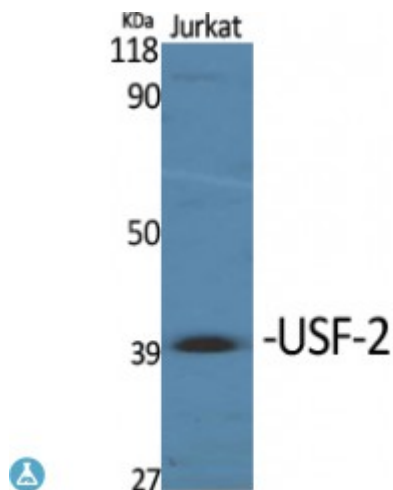


Anti-USF-2 antibody



Description	Rabbit polyclonal to USF-2.
Model	STJ96192
Host	Rabbit
Reactivity	Human, Mouse, Rat
Applications	ELISA, IHC, WB
Immunogen	Synthesized peptide derived from human USF-2
Immunogen Region	170-250 aa, Internal
Gene ID	7392
Gene Symbol	USF2
Dilution range	WB 1:500-1:2000IHC 1:100-1:300ELISA 1:20000
Specificity	USF-2 Polyclonal Antibody detects endogenous levels of USF-2 protein.
Tissue Specificity	Ubiquitous.
Purification	The antibody was affinity-purified from rabbit antiserum by affinity-chromatography using epitope-specific immunogen.
Note	For Research Use Only (RUO).
Protein Name	Upstream stimulatory factor 2 Class B basic helix-loop-helix protein 12 bHLHb12 FOS-interacting protein FIP Major late transcription factor 2 Upstream transcription factor 2
Molecular Weight	44 kDa
Clonality	Polyclonal

Conjugation	Unconjugated
Isotype	IgG
Formulation	Liquid in PBS containing 50% glycerol, 0.5% BSA and 0.02% sodium azide.
Concentration	1 mg/ml
Storage Instruction	Store at -20°C, and avoid repeat freeze-thaw cycles.
Database Links	HGNC:12594OMIM:600390
Alternative Names	Upstream stimulatory factor 2 Class B basic helix-loop-helix protein 12 bHLHb12 FOS-interacting protein FIP Major late transcription factor 2 Upstream transcription factor 2
Function	Transcription factor that binds to a symmetrical DNA sequence (E-boxes) (5'-CACGTG-3') that is found in a variety of viral and cellular promoters.
Cellular Localization	Nucleus.

St John's Laboratory Ltd

F +44 (0)207 681 2580

T +44 (0)208 223 3081

W <http://www.stjohnslabs.com/>

E info@stjohnslabs.com