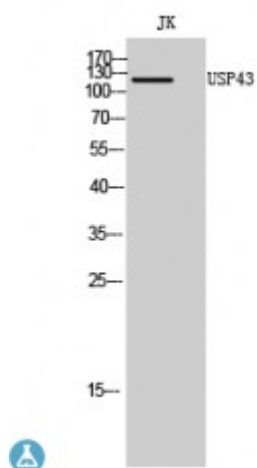


## Anti-USP43 antibody



<b>Description</b>	Rabbit polyclonal to USP43.
<b>Model</b>	STJ96205
<b>Host</b>	Rabbit
<b>Reactivity</b>	Human, Mouse
<b>Applications</b>	ELISA, WB
<b>Immunogen</b>	Synthesized peptide derived from human USP43.
<b>Immunogen Region</b>	N-terminal
<b>Gene ID</b>	<a href="#">124739</a>
<b>Gene Symbol</b>	<a href="#">USP43</a>
<b>Dilution range</b>	WB 1:500-1:2000ELISA 1:40000
<b>Specificity</b>	USP43 Polyclonal Antibody detects endogenous levels of USP43 protein.
<b>Tissue Specificity</b>	Expressed in brain, aorta and lung at low levels.
<b>Purification</b>	The antibody was affinity-purified from rabbit antiserum by affinity-chromatography using epitope-specific immunogen.
<b>Note</b>	For Research Use Only (RUO).
<b>Protein Name</b>	Ubiquitin carboxyl-terminal hydrolase 43 Deubiquitinating enzyme 43 Ubiquitin thioesterase 43 Ubiquitin-specific-processing protease 43
<b>Molecular Weight</b>	125 kDa
<b>Clonality</b>	Polyclonal

<b>Conjugation</b>	Unconjugated
<b>Isotype</b>	IgG
<b>Formulation</b>	Liquid in PBS containing 50% glycerol, 0.5% BSA and 0.02% sodium azide.
<b>Concentration</b>	1 mg/ml
<b>Storage Instruction</b>	Store at -20°C, and avoid repeat freeze-thaw cycles.
<b>Database Links</b>	<a href="#">HGNC:20072</a> OMIM:NA
<b>Alternative Names</b>	Ubiquitin carboxyl-terminal hydrolase 43 Deubiquitinating enzyme 43 Ubiquitin thioesterase 43 Ubiquitin-specific-processing protease 43
<b>Function</b>	May recognize and hydrolyze the peptide bond at the C-terminal Gly of ubiquitin. Involved in the processing of poly-ubiquitin precursors as well as that of ubiquitinated proteins .

---

**St John's Laboratory Ltd**

**F** +44 (0)207 681 2580

**T** +44 (0)208 223 3081

**W** <http://www.stjohnslabs.com/>

**E** [info@stjohnslabs.com](mailto:info@stjohnslabs.com)