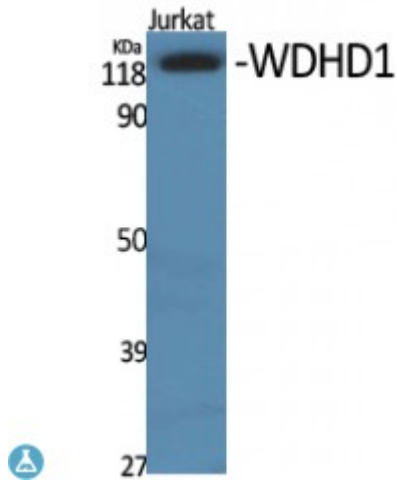


Anti-WDHD1 antibody



Description	Rabbit polyclonal to WDHD1.
Model	STJ96267
Host	Rabbit
Reactivity	Human
Applications	ELISA, IHC, WB
Immunogen	Synthesized peptide derived from human WDHD1
Immunogen Region	690-770 aa, Internal
Gene ID	11169
Gene Symbol	WDHD1
Dilution range	WB 1:500-1:2000IHC 1:100-1:300ELISA 1:10000
Specificity	WDHD1 Polyclonal Antibody detects endogenous levels of WDHD1 protein.
Purification	The antibody was affinity-purified from rabbit antiserum by affinity-chromatography using epitope-specific immunogen.
Note	For Research Use Only (RUO).
Protein Name	WD repeat and HMG-box DNA-binding protein 1 Acidic nucleoplasmic DNA-binding protein 1 And-1
Molecular Weight	125 kDa
Clonality	Polyclonal
Conjugation	Unconjugated

Isotype	IgG
Formulation	Liquid in PBS containing 50% glycerol, 0.5% BSA and 0.02% sodium azide.
Concentration	1 mg/ml
Storage Instruction	Store at -20°C, and avoid repeat freeze-thaw cycles.
Database Links	HGNC:231700MIM:608126
Alternative Names	WD repeat and HMG-box DNA-binding protein 1 Acidic nucleoplasmic DNA-binding protein 1 And-1
Function	Acts as a replication initiation factor that brings together the MCM2-7 helicase and the DNA polymerase alpha/primase complex in order to initiate DNA replication.
Cellular Localization	Nucleus, nucleoplasm

St John's Laboratory Ltd

F +44 (0)207 681 2580

T +44 (0)208 223 3081

W <http://www.stjohnslabs.com/>

E info@stjohnslabs.com