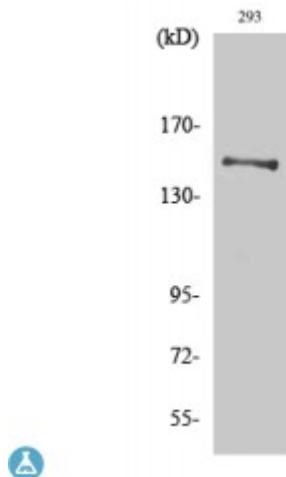


Anti-YEATS2 antibody



Description	Rabbit polyclonal to YEATS2.
Model	STJ96291
Host	Rabbit
Reactivity	Human
Applications	ELISA, IHC, WB
Immunogen	Synthesized peptide derived from human YEATS2
Immunogen Region	310-390 aa, Internal
Gene ID	55689
Gene Symbol	YEATS2
Dilution range	WB 1:500-1:2000IHC 1:100-1:300ELISA 1:5000
Specificity	YEATS2 Polyclonal Antibody detects endogenous levels of YEATS2 protein.
Purification	The antibody was affinity-purified from rabbit antiserum by affinity-chromatography using epitope-specific immunogen.
Note	For Research Use Only (RUO).
Protein Name	YEATS domain-containing protein 2
Molecular Weight	150 kDa
Clonality	Polyclonal
Conjugation	Unconjugated
Isotype	IgG

Formulation	Liquid in PBS containing 50% glycerol, 0.5% BSA and 0.02% sodium azide.
Concentration	1 mg/ml
Storage Instruction	Store at -20°C, and avoid repeat freeze-thaw cycles.
Database Links	HGNC:25489OMIM:613373
Alternative Names	YEATS domain-containing protein 2
Function	Component of the ATAC complex, a complex with histone acetyltransferase activity on histones H3 and H4.
Cellular Localization	Nucleus

St John's Laboratory Ltd

F +44 (0)207 681 2580

T +44 (0)208 223 3081

W <http://www.stjohnslabs.com/>

E info@stjohnslabs.com