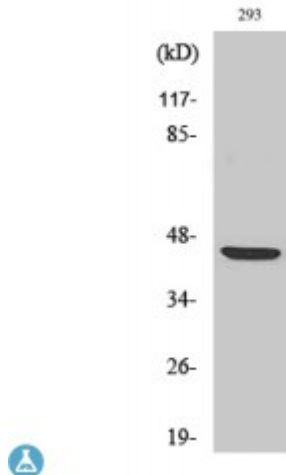


Anti-ZAR1 antibody



Description	Rabbit polyclonal to ZAR1.
Model	STJ96298
Host	Rabbit
Reactivity	Human
Applications	ELISA, WB
Immunogen	Synthesized peptide derived from human ZAR1.
Immunogen Region	Internal
Gene ID	326340
Gene Symbol	ZAR1
Dilution range	WB 1:500-1:2000ELISA 1:20000
Specificity	ZAR1 Polyclonal Antibody detects endogenous levels of ZAR1 protein.
Tissue Specificity	Ovary and testis.
Purification	The antibody was affinity-purified from rabbit antiserum by affinity-chromatography using epitope-specific immunogen.
Note	For Research Use Only (RUO).
Protein Name	Zygote arrest protein 1 Oocyte-specific maternal effect factor
Molecular Weight	45 kDa
Clonality	Polyclonal
Conjugation	Unconjugated

Isotype	IgG
Formulation	Liquid in PBS containing 50% glycerol, 0.5% BSA and 0.02% sodium azide.
Concentration	1 mg/ml
Storage Instruction	Store at -20°C, and avoid repeat freeze-thaw cycles.
Database Links	HGNC:20436 OMIM:607520
Alternative Names	Zygote arrest protein 1 Oocyte-specific maternal effect factor
Function	Essential for female fertility. May play a role in the oocyte-to-embryo transition .
Cellular Localization	Cytoplasm

St John's Laboratory Ltd

F +44 (0)207 681 2580
T +44 (0)208 223 3081

W <http://www.stjohnslabs.com/>
E info@stjohnslabs.com