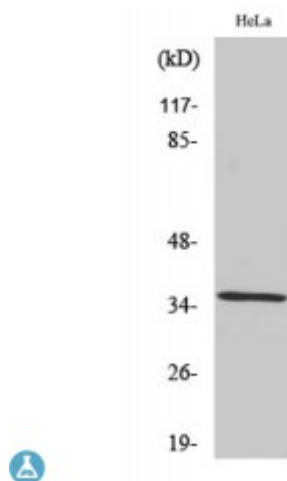


Anti-ZIS antibody



Description	Rabbit polyclonal to ZIS.
Model	STJ96317
Host	Rabbit
Reactivity	Human, Mouse, Rat
Applications	ELISA, IF, IHC, WB
Immunogen	Synthesized peptide derived from human ZIS
Immunogen Region	80-160 aa, Internal
Gene ID	9406
Gene Symbol	ZRANB2
Dilution range	WB 1:500-1:2000IHC 1:100-1:300IF 1:200-1:1000ELISA 1:10000
Specificity	ZIS Polyclonal Antibody detects endogenous levels of ZIS protein.
Purification	The antibody was affinity-purified from rabbit antiserum by affinity-chromatography using epitope-specific immunogen.
Note	For Research Use Only (RUO).
Protein Name	Zinc finger Ran-binding domain-containing protein 2 Zinc finger protein 265 Zinc finger, splicing
Molecular Weight	34 kDa
Clonality	Polyclonal
Conjugation	Unconjugated

Isotype	IgG
Formulation	Liquid in PBS containing 50% glycerol, 0.5% BSA and 0.02% sodium azide.
Concentration	1 mg/ml
Storage Instruction	Store at -20°C, and avoid repeat freeze-thaw cycles.
Database Links	HGNC:13058 OMIM:604347
Alternative Names	Zinc finger Ran-binding domain-containing protein 2 Zinc finger protein 265 Zinc finger, splicing
Function	Splice factor required for alternative splicing of TRA2B/SFRS10 transcripts. May interfere with constitutive 5'-splice site selection.
Sequence and Domain Family	The RanBP2-type zinc fingers mediate binding to RNA.
Cellular Localization	Nucleus
Post-translational Modifications	Isoform 2 is phosphorylated on Ser-310 upon DNA damage, probably by ATM or ATR.

St John's Laboratory Ltd

F +44 (0)207 681 2580

T +44 (0)208 223 3081

W <http://www.stjohnslabs.com/>

E info@stjohnslabs.com