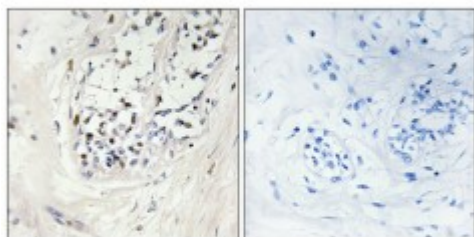


Anti-ZNF23 antibody



Description	Rabbit polyclonal to ZNF23.
Model	STJ96322
Host	Rabbit
Reactivity	Human
Applications	ELISA, IF, IHC, WB
Immunogen	Synthesized peptide derived from human ZNF23
Immunogen Region	120-200 aa, Internal
Gene ID	7571
Gene Symbol	ZNF23
Dilution range	WB 1:500-1:2000IHC 1:100-1:300IF 1:200-1:1000ELISA 1:10000
Specificity	ZNF23 Polyclonal Antibody detects endogenous levels of ZNF23 protein.
Purification	The antibody was affinity-purified from rabbit antiserum by affinity-chromatography using epitope-specific immunogen.
Note	For Research Use Only (RUO).
Protein Name	Zinc finger protein 23 Zinc finger protein 359 Zinc finger protein 612 Zinc finger protein KOX16
Molecular Weight	70 kDa
Clonality	Polyclonal
Conjugation	Unconjugated

Isotype	IgG
Formulation	Liquid in PBS containing 50% glycerol, 0.5% BSA and 0.02% sodium azide.
Concentration	1 mg/ml
Storage Instruction	Store at -20°C, and avoid repeat freeze-thaw cycles.
Database Links	HGNC:13023OMIM:194527
Alternative Names	Zinc finger protein 23 Zinc finger protein 359 Zinc finger protein 612 Zinc finger protein KOX16
Function	May be involved in transcriptional regulation. May have a role in embryonic development.
Cellular Localization	Nucleus

St John's Laboratory Ltd

F +44 (0)207 681 2580
T +44 (0)208 223 3081

W <http://www.stjohnslabs.com/>
E info@stjohnslabs.com