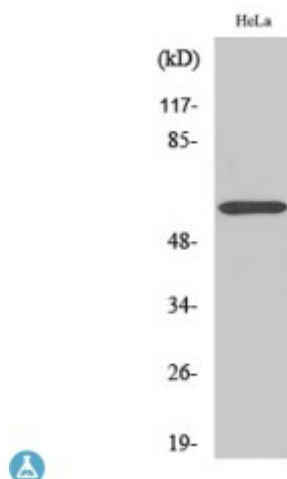


Anti-ZNF397 antibody



Description	Rabbit polyclonal to ZNF397.
Model	STJ96329
Host	Rabbit
Reactivity	Human
Applications	ELISA, IF, IHC, WB
Immunogen	Synthesized peptide derived from human ZNF397
Immunogen Region	10-90 aa, N-terminal
Gene ID	84307
Gene Symbol	ZNF397
Dilution range	WB 1:500-1:2000IHC 1:100-1:300IF 1:200-1:1000ELISA 1:5000
Specificity	ZNF397 Polyclonal Antibody detects endogenous levels of ZNF397 protein.
Tissue Specificity	Expressed strongly in testis, moderately in skeletal muscle, pancreas and prostate, and weakly in heart, placenta, liver, kidney, spleen, thymus and small intestine.
Purification	The antibody was affinity-purified from rabbit antiserum by affinity-chromatography using epitope-specific immunogen.
Note	For Research Use Only (RUO).
Protein Name	Zinc finger protein 397 Zinc finger and SCAN domain-containing protein 15 Zinc finger protein 47
Molecular Weight	61 kDa

Clonality	Polyclonal
Conjugation	Unconjugated
Isotype	IgG
Formulation	Liquid in PBS containing 50% glycerol, 0.5% BSA and 0.02% sodium azide.
Concentration	1 mg/ml
Storage Instruction	Store at -20°C, and avoid repeat freeze-thaw cycles.
Database Links	HGNC:18818OMIM:609601
Alternative Names	Zinc finger protein 397 Zinc finger and SCAN domain-containing protein 15 Zinc finger protein 47
Function	Isoform 3 acts as a DNA-dependent transcriptional repressor.
Cellular Localization	Isoform 1: Nucleus.. Isoform 3: Nucleus. Cytoplasm.

St John's Laboratory Ltd

F +44 (0)207 681 2580

T +44 (0)208 223 3081

W <http://www.stjohnslabs.com/>

E info@stjohnslabs.com