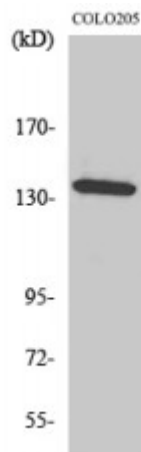


Anti-alpha-protein Kinase 1 antibody



Description	Rabbit polyclonal to alpha-protein Kinase 1.
Model	STJ96366
Host	Rabbit
Reactivity	Human, Mouse
Applications	ELISA, IF, IHC, WB
Immunogen	Synthesized peptide derived from human alpha-protein Kinase 1
Immunogen Region	30-110 aa, N-terminal
Gene ID	80216
Gene Symbol	ALPK1
Dilution range	WB 1:500-1:2000IHC 1:100-1:300IF 1:200-1:1000ELISA 1:20000
Specificity	alpha-protein Kinase 1 Polyclonal Antibody detects endogenous levels of alpha-protein Kinase 1 protein.
Tissue Specificity	Highly expressed in liver.
Purification	The antibody was affinity-purified from rabbit antiserum by affinity-chromatography using epitope-specific immunogen.
Note	For Research Use Only (RUO).
Protein Name	Alpha-protein kinase 1 Chromosome 4 kinase Lymphocyte alpha-protein kinase
Molecular Weight	139 kDa
Clonality	Polyclonal

Conjugation	Unconjugated
Isotype	IgG
Formulation	Liquid in PBS containing 50% glycerol, 0.5% BSA and 0.02% sodium azide.
Concentration	1 mg/ml
Storage Instruction	Store at -20°C, and avoid repeat freeze-thaw cycles.
Database Links	HGNC:20917OMIM:607347
Alternative Names	Alpha-protein kinase 1 Chromosome 4 kinase Lymphocyte alpha-protein kinase
Function	Kinase that recognizes phosphorylation sites in which the surrounding peptides have an alpha-helical conformation.

St John's Laboratory Ltd

F +44 (0)207 681 2580
T +44 (0)208 223 3081

W <http://www.stjohnslabs.com/>
E info@stjohnslabs.com