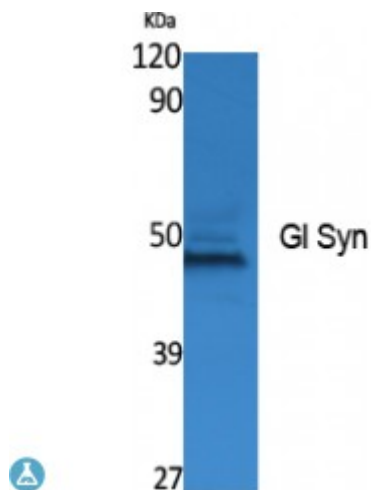


Anti-Gl Syn antibody



Description	Rabbit polyclonal to Gl Syn.
Model	STJ96400
Host	Rabbit
Reactivity	Human, Mouse, Rat
Applications	ELISA, WB
Immunogen	Synthesized peptide derived from human Gl Syn.
Immunogen Region	Internal
Gene ID	2752
Gene Symbol	GLUL
Dilution range	WB 1:500-1:2000ELISA 1:20000
Specificity	Gl Syn Polyclonal Antibody detects endogenous levels of Gl Syn protein.
Purification	The antibody was affinity-purified from rabbit antiserum by affinity-chromatography using epitope-specific immunogen.
Note	For Research Use Only (RUO).
Protein Name	Glutamine synthetase GS Glutamate decarboxylase Glutamate--ammonia ligase
Molecular Weight	49 kDa
Clonality	Polyclonal
Conjugation	Unconjugated

Isotype	IgG
Formulation	Liquid in PBS containing 50% glycerol, 0.5% BSA and 0.02% sodium azide.
Concentration	1 mg/ml
Storage Instruction	Store at -20°C, and avoid repeat freeze-thaw cycles.
Database Links	HGNC:4341OMIM:138290
Alternative Names	Glutamine synthetase GS Glutamate decarboxylase Glutamate--ammonia ligase
Function	This enzyme has 2 functions: it catalyzes the production of glutamine and 4-aminobutanoate (gamma-aminobutyric acid, GABA), the latter in a pyridoxal phosphate-independent manner . Essential for proliferation of fetal skin fibroblasts.
Cellular Localization	Cytoplasm. Mitochondrion
Post-translational Modifications	Ubiquitinated by ZNRF1.

St John's Laboratory Ltd

F +44 (0)207 681 2580

T +44 (0)208 223 3081

W <http://www.stjohnslabs.com/>

E info@stjohnslabs.com