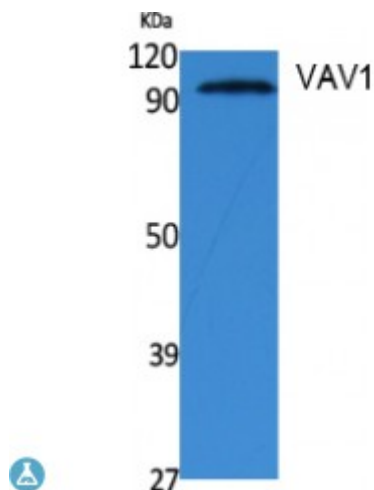


Anti-VAV1 antibody



Description	Rabbit polyclonal to VAV1.
Model	STJ96406
Host	Rabbit
Reactivity	Human, Mouse, Rat
Applications	ELISA, WB
Immunogen	Synthesized peptide derived from human Vav around the non-phosphorylation site of Y160.
Immunogen Region	100-180 aa
Gene ID	7409
Gene Symbol	VAV1
Dilution range	WB 1:500-1:2000ELISA 1:5000
Specificity	VAV1 Polyclonal Antibody detects endogenous levels of VAV1 protein.
Tissue Specificity	Widely expressed in hematopoietic cells but not in other cell types.
Purification	The antibody was affinity-purified from rabbit antiserum by affinity-chromatography using epitope-specific immunogen.
Note	For Research Use Only (RUO).
Protein Name	Proto-oncogene vav
Molecular Weight	95 kDa
Clonality	Polyclonal

Conjugation	Unconjugated
Isotype	IgG
Formulation	Liquid in PBS containing 50% glycerol, 0.5% BSA and 0.02% sodium azide.
Concentration	1 mg/ml
Storage Instruction	Store at -20°C, and avoid repeat freeze-thaw cycles.
Database Links	HGNC:12657OMIM:164875
Alternative Names	Proto-oncogene vav
Function	Couples tyrosine kinase signals with the activation of the Rho/Rac GTPases, thus leading to cell differentiation and/or proliferation.
Sequence and Domain Family	The DH domain is involved in interaction with CCPG1.
Post-translational Modifications	Phosphorylated on tyrosine residues by HCK in response to IFNG and bacterial lipopolysaccharide (LPS) . Phosphorylated by FYN.

St John's Laboratory Ltd

F +44 (0)207 681 2580
T +44 (0)208 223 3081

W <http://www.stjohnslabs.com/>
E info@stjohnslabs.com