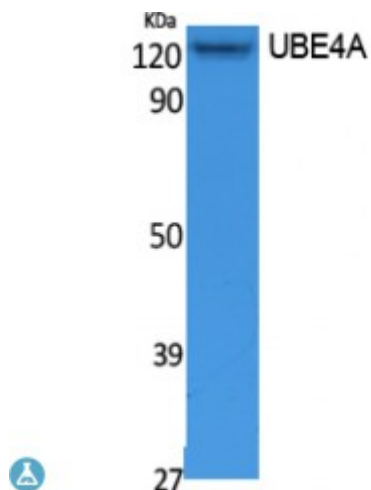


Anti-UBE4A antibody



Description	Rabbit polyclonal to UBE4A.
Model	STJ96445
Host	Rabbit
Reactivity	Human, Mouse, Rat
Applications	ELISA, IHC, WB
Immunogen	Synthesized peptide derived from human UBE4A.
Immunogen Region	N-terminal
Gene ID	9354
Gene Symbol	UBE4A
Dilution range	WB 1:500-1:2000IHC-P 1:100-300ELISA 1:10000
Specificity	UBE4A Polyclonal Antibody detects endogenous levels of UBE4A protein.
Purification	The antibody was affinity-purified from rabbit antiserum by affinity-chromatography using epitope-specific immunogen.
Note	For Research Use Only (RUO).
Protein Name	Ubiquitin conjugation factor E4 A RING-type E3 ubiquitin transferase E4 A
Molecular Weight	122 kDa
Clonality	Polyclonal
Conjugation	Unconjugated
Isotype	IgG

Formulation	Liquid in PBS containing 50% glycerol, 0.5% BSA and 0.02% sodium azide.
Concentration	1 mg/ml
Storage Instruction	Store at -20°C, and avoid repeat freeze-thaw cycles.
Database Links	HGNC:12499OMIM:603753
Alternative Names	Ubiquitin conjugation factor E4 A RING-type E3 ubiquitin transferase E4 A
Function	Ubiquitin-protein ligase that probably functions as an E3 ligase in conjunction with specific E1 and E2 ligases. May also function as an E4 ligase mediating the assembly of polyubiquitin chains on substrates ubiquitinated by another E3 ubiquitin ligase. Mediates 'Lys-48'-linked polyubiquitination of substrates.
Sequence and Domain Family	The U-box domain is required for the ubiquitin protein ligase activity.
Cellular Localization	Cytoplasm

St John's Laboratory Ltd

F +44 (0)207 681 2580

T +44 (0)208 223 3081

W <http://www.stjohnslabs.com/>

E info@stjohnslabs.com