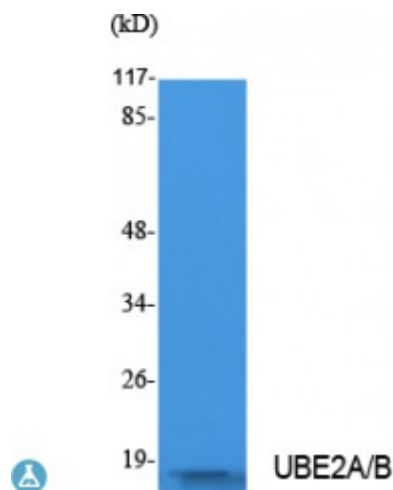


Anti-UBE2A/B antibody



Description	Rabbit polyclonal to UBE2A/B.
Model	STJ96446
Host	Rabbit
Reactivity	Human, Mouse, Rat
Applications	ELISA, IHC, WB
Immunogen	Synthesized peptide derived from human UBE2A/B.
Immunogen Region	C-terminal
Gene ID	7319
Gene Symbol	UBE2A
Dilution range	WB 1:500-1:2000IHC-P 1:100-300ELISA 1:10000
Specificity	UBE2A/B Polyclonal Antibody detects endogenous levels of UBE2A/B protein.
Purification	The antibody was affinity-purified from rabbit antiserum by affinity-chromatography using epitope-specific immunogen.
Note	For Research Use Only (RUO).
Protein Name	Ubiquitin-conjugating enzyme E2 A E2 ubiquitin-conjugating enzyme A RAD6 homolog A HR6A hHR6A Ubiquitin carrier protein A Ubiquitin-protein ligase A
Molecular Weight	17312/17315 kDa
Clonality	Polyclonal

Conjugation	Unconjugated
Isotype	IgG
Formulation	Liquid in PBS containing 50% glycerol, 0.5% BSA and 0.02% sodium azide.
Concentration	1 mg/ml
Storage Instruction	Store at -20°C, and avoid repeat freeze-thaw cycles.
Database Links	HGNC:12472OMIM:300860
Alternative Names	Ubiquitin-conjugating enzyme E2 A E2 ubiquitin-conjugating enzyme A RAD6 homolog A HR6A hHR6A Ubiquitin carrier protein A Ubiquitin-protein ligase A
Function	Accepts ubiquitin from the E1 complex and catalyzes its covalent attachment to other proteins. In association with the E3 enzyme BRE1 (RNF20 and/or RNF40), it plays a role in transcription regulation by catalyzing the monoubiquitination of histone H2B at 'Lys-120' to form H2BK120ub1. H2BK120ub1 gives a specific tag for epigenetic transcriptional activation, elongation by RNA polymerase II, telomeric silencing, and is also a prerequisite for H3K4me and H3K79me formation. In vitro catalyzes 'Lys-11', as well as 'Lys-48'-linked polyubiquitination. Required for postreplication repair of UV-damaged DNA.
Post-translational Modifications	Phosphorylation at Ser-120 by CDK9 increases activity towards histone H2B.