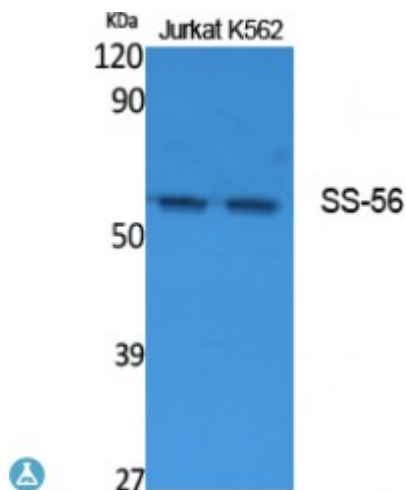


Anti-SS-56 antibody



Description	Rabbit polyclonal to SS-56.
Model	STJ96447
Host	Rabbit
Reactivity	Human
Applications	ELISA, IHC, WB
Immunogen	Synthesized peptide derived from human SS-56.
Immunogen Region	Internal
Gene ID	55128
Gene Symbol	TRIM68
Dilution range	WB 1:500-1:2000IHC-P 1:100-300ELISA 1:40000
Specificity	SS-56 Polyclonal Antibody detects endogenous levels of SS-56 protein.
Tissue Specificity	Widely expressed. Expressed at high levels in prostate cancer cell lines. Up-regulation could be restricted to androgen-dependent cells.
Purification	The antibody was affinity-purified from rabbit antiserum by affinity-chromatography using epitope-specific immunogen.
Note	For Research Use Only (RUO).
Protein Name	E3 ubiquitin-protein ligase TRIM68 RING finger protein 137 RING-type E3 ubiquitin transferase TRIM68 SSA protein SS-56 SS-56 Tripartite motif-containing protein 68
Molecular Weight	56 kDa

Clonality	Polyclonal
Conjugation	Unconjugated
Isotype	IgG
Formulation	Liquid in PBS containing 50% glycerol, 0.5% BSA and 0.02% sodium azide.
Concentration	1 mg/ml
Storage Instruction	Store at -20°C, and avoid repeat freeze-thaw cycles.
Database Links	HGNC:21161OMIM:613184
Alternative Names	E3 ubiquitin-protein ligase TRIM68 RING finger protein 137 RING-type E3 ubiquitin transferase TRIM68 SSA protein SS-56 SS-56 Tripartite motif-containing protein 68
Function	Functions as a ubiquitin E3 ligase. Acts as a coactivator of androgen receptor (AR) depending on its ubiquitin ligase activity.
Sequence and Domain Family	The RING domain is essential for ubiquitin E3 ligase activity.
Cellular Localization	Cytoplasm, perinuclear region. Nucleus. Colocalized with AR in nucleus.
Post-translational Modifications	Auto-ubiquitinated.

St John's Laboratory Ltd

F +44 (0)207 681 2580

T +44 (0)208 223 3081

W <http://www.stjohnslabs.com/>

E info@stjohnslabs.com