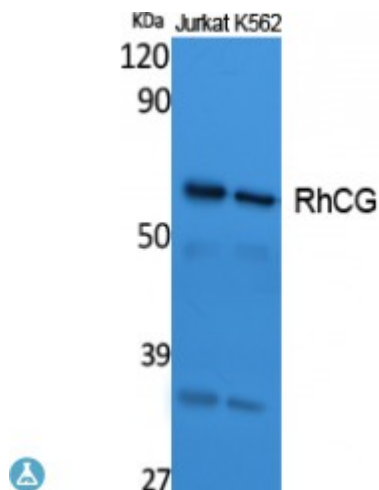


Anti-RhCG antibody



Description	Rabbit polyclonal to RhCG.
Model	STJ96453
Host	Rabbit
Reactivity	Human
Applications	ELISA, IHC, WB
Immunogen	Synthesized peptide derived from human RhCG.
Immunogen Region	Internal
Gene ID	51458
Gene Symbol	RHCG
Dilution range	WB 1:500-1:2000IHC-P 1:100-300ELISA 1:40000
Specificity	RhCG Polyclonal Antibody detects endogenous levels of RhCG protein.
Tissue Specificity	Expressed in brain, testis, placenta, pancreas, esophagus and prostate. Expressed in squamous epithelial tissues (at protein level). According to PubMed:11062476, specifically expressed in kidney.
Purification	The antibody was affinity-purified from rabbit antiserum by affinity-chromatography using epitope-specific immunogen.
Note	For Research Use Only (RUO).
Protein Name	Ammonium transporter Rh type C Rh glycoprotein kidney Rhesus blood group family type C glycoprotein Rh family type C glycoprotein Rh type C glycoprotein Tumor-related protein DRC2

Molecular Weight	58/35 kDa
Clonality	Polyclonal
Conjugation	Unconjugated
Isotype	IgG
Formulation	Liquid in PBS containing 50% glycerol, 0.5% BSA and 0.02% sodium azide.
Concentration	1 mg/ml
Storage Instruction	Store at -20°C, and avoid repeat freeze-thaw cycles.
Database Links	HGNC:18140 MIM:605381
Alternative Names	Ammonium transporter Rh type C Rh glycoprotein kidney Rhesus blood group family type C glycoprotein Rh family type C glycoprotein Rh type C glycoprotein Tumor-related protein DRC2
Function	Functions as an electroneutral and bidirectional ammonium transporter. May regulate transepithelial ammonia secretion.
Cellular Localization	Apical cell membrane. Also detected at the basolateral membrane and in subapical vesicles.
Post-translational Modifications	N-glycosylated.