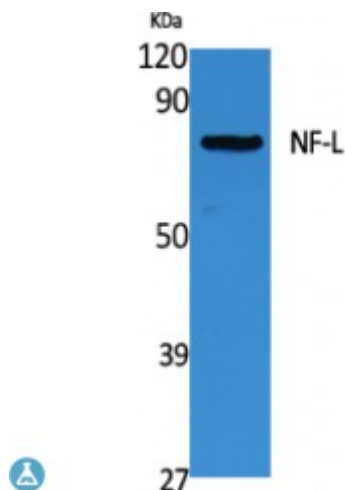


Anti-NF-L antibody



Description	Rabbit polyclonal to NF-L.
Model	STJ96461
Host	Rabbit
Reactivity	Human, Mouse, Rat
Applications	ELISA, IHC, WB
Immunogen	Synthesized peptide derived from human NF-L.
Immunogen Region	C-terminal
Gene ID	4747
Gene Symbol	NEFL
Dilution range	WB 1:500-1:2000IHC-P 1:100-300ELISA 1:40000
Specificity	NF-L Polyclonal Antibody detects endogenous levels of NF-L protein.
Purification	The antibody was affinity-purified from rabbit antiserum by affinity-chromatography using epitope-specific immunogen.
Note	For Research Use Only (RUO).
Protein Name	Neurofilament light polypeptide NF-L 68 kDa neurofilament protein Neurofilament triplet L protein
Molecular Weight	62 kDa
Clonality	Polyclonal
Conjugation	Unconjugated

Isotype	IgG
Formulation	Liquid in PBS containing 50% glycerol, 0.5% BSA and 0.02% sodium azide.
Concentration	1 mg/ml
Storage Instruction	Store at -20°C, and avoid repeat freeze-thaw cycles.
Database Links	HGNC:7739OMIM:162280
Alternative Names	Neurofilament light polypeptide NF-L 68 kDa neurofilament protein Neurofilament triplet L protein
Function	Neurofilaments usually contain three intermediate filament proteins: L, M, and H which are involved in the maintenance of neuronal caliber.
Sequence and Domain Family	The extra mass and high charge density that distinguish the neurofilament proteins from all other intermediate filament proteins are due to the tailpiece extensions. This region may form a charged scaffolding structure suitable for interaction with other neuronal components or ions.
Post-translational Modifications	O-glycosylated. Phosphorylated in the head and rod regions by the PKC kinase PKN1, leading to the inhibition of polymerization. Ubiquitinated in the presence of TRIM2 and UBE2D1.

St John's Laboratory Ltd

F +44 (0)207 681 2580

T +44 (0)208 223 3081

W <http://www.stjohnslabs.com/>

E info@stjohnslabs.com