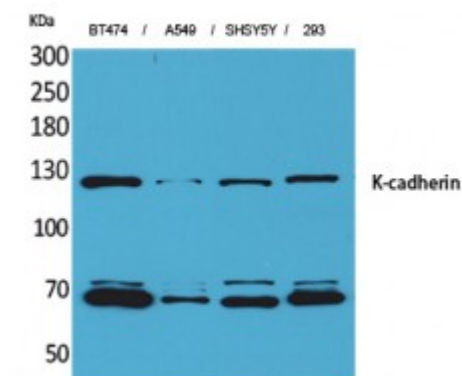


## Anti-K-cadherin antibody



<b>Description</b>	Rabbit polyclonal to K-cadherin.
<b>Model</b>	STJ96476
<b>Host</b>	Rabbit
<b>Reactivity</b>	Human, Mouse, Rat
<b>Applications</b>	ELISA, IHC, WB
<b>Immunogen</b>	Synthesized peptide derived from human K-cadherin
<b>Immunogen Region</b>	180-260 aa, Internal
<b>Gene ID</b>	<a href="#">1004</a>
<b>Gene Symbol</b>	<a href="#">CDH6</a>
<b>Dilution range</b>	WB 1:500-1:2000IHC-P 1:100-300ELISA 1:20000
<b>Specificity</b>	K-cadherin Polyclonal Antibody detects endogenous levels of K-cadherin protein.
<b>Tissue Specificity</b>	Highly expressed in brain, cerebellum, and kidney. Lung, pancreas, and gastric mucosa show a weak expression. Also expressed in certain liver and kidney carcinomas.
<b>Purification</b>	The antibody was affinity-purified from rabbit antiserum by affinity-chromatography using epitope-specific immunogen.
<b>Note</b>	For Research Use Only (RUO).
<b>Protein Name</b>	Cadherin-6 Kidney cadherin K-cadherin
<b>Molecular Weight</b>	88 90 kDa

<b>Clonality</b>	Polyclonal
<b>Conjugation</b>	Unconjugated
<b>Isotype</b>	IgG
<b>Formulation</b>	Liquid in PBS containing 50% glycerol, 0.5% BSA and 0.02% sodium azide.
<b>Concentration</b>	1 mg/ml
<b>Storage Instruction</b>	Store at -20°C, and avoid repeat freeze-thaw cycles.
<b>Database Links</b>	<a href="#">HGNC:1765OMIM:603007</a>
<b>Alternative Names</b>	Cadherin-6 Kidney cadherin K-cadherin
<b>Function</b>	Cadherins are calcium-dependent cell adhesion proteins. They preferentially interact with themselves in a homophilic manner in connecting cells; cadherins may thus contribute to the sorting of heterogeneous cell types.
<b>Sequence and Domain Family</b>	Three calcium ions are usually bound at the interface of each cadherin domain and rigidify the connections, imparting a strong curvature to the full-length ectodomain.
<b>Cellular Localization</b>	Cell membrane. Single-pass type I membrane protein.