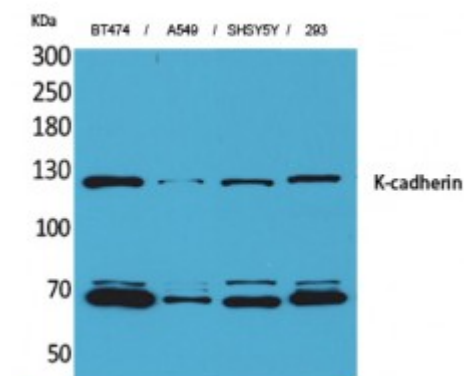


Anti-K-cadherin antibody



Description	Rabbit polyclonal to K-cadherin.
Model	STJ96476
Host	Rabbit
Reactivity	Human, Mouse, Rat
Applications	ELISA, IHC, WB
Immunogen	Synthesized peptide derived from human K-cadherin
Immunogen Region	180-260 aa, Internal
Gene ID	1004
Gene Symbol	CDH6
Dilution range	WB 1:500-1:2000IHC-P 1:100-300ELISA 1:20000
Specificity	K-cadherin Polyclonal Antibody detects endogenous levels of K-cadherin protein.
Tissue Specificity	Highly expressed in brain, cerebellum, and kidney. Lung, pancreas, and gastric mucosa show a weak expression. Also expressed in certain liver and kidney carcinomas.
Purification	The antibody was affinity-purified from rabbit antiserum by affinity-chromatography using epitope-specific immunogen.
Note	For Research Use Only (RUO).
Protein Name	Cadherin-6 Kidney cadherin K-cadherin
Molecular Weight	88 90 kDa

Clonality	Polyclonal
Conjugation	Unconjugated
Isotype	IgG
Formulation	Liquid in PBS containing 50% glycerol, 0.5% BSA and 0.02% sodium azide.
Concentration	1 mg/ml
Storage Instruction	Store at -20°C, and avoid repeat freeze-thaw cycles.
Database Links	HGNC:1765OMIM:603007
Alternative Names	Cadherin-6 Kidney cadherin K-cadherin
Function	Cadherins are calcium-dependent cell adhesion proteins. They preferentially interact with themselves in a homophilic manner in connecting cells; cadherins may thus contribute to the sorting of heterogeneous cell types.
Sequence and Domain Family	Three calcium ions are usually bound at the interface of each cadherin domain and rigidify the connections, imparting a strong curvature to the full-length ectodomain.
Cellular Localization	Cell membrane. Single-pass type I membrane protein.