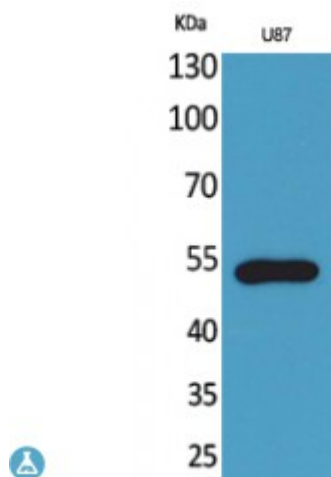


Anti-Fractalkine Receptor antibody



Description	Rabbit polyclonal to Fractalkine Receptor.
Model	STJ96477
Host	Rabbit
Reactivity	Human, Mouse, Rat
Applications	ELISA, IHC, WB
Immunogen	Synthesized peptide derived from human Fractalkine Receptor
Immunogen Region	120-200 aa, Internal
Gene ID	1524
Gene Symbol	CX3CR1
Dilution range	WB 1:500-1:2000IHC-P 1:100-300ELISA 1:20000
Specificity	Fractalkine Receptor Polyclonal Antibody detects endogenous levels of Fractalkine Receptor protein.
Tissue Specificity	Expressed in lymphoid and neural tissues.
Purification	The antibody was affinity-purified from rabbit antiserum by affinity-chromatography using epitope-specific immunogen.
Note	For Research Use Only (RUO).
Protein Name	CX3C chemokine receptor 1 C-X3-C CKR-1 CX3CR1 Beta chemokine receptor-like 1 CMK-BRL-1 CMK-BRL1 Fractalkine receptor G-protein coupled receptor 13 V28
Molecular Weight	40.396 kDa

Clonality	Polyclonal
Conjugation	Unconjugated
Isotype	IgG
Formulation	Liquid in PBS containing 50% glycerol, 0.5% BSA and 0.02% sodium azide.
Concentration	1 mg/ml
Storage Instruction	Store at -20°C, and avoid repeat freeze-thaw cycles.
Database Links	HGNC:2558OMIM:601470
Alternative Names	CX3C chemokine receptor 1 C-X3-C CKR-1 CX3CR1 Beta chemokine receptor-like 1 CMK-BRL-1 CMK-BRL1 Fractalkine receptor G-protein coupled receptor 13 V28
Function	Receptor for the CX3C chemokine fractalkine (CX3CL1); binds to CX3CL1 and mediates both its adhesive and migratory functions . Acts as coreceptor with CD4 for HIV-1 virus envelope protein (in vitro) . Isoform 2 and isoform 3 seem to be more potent HIV-1 coreceptors than isoform 1 .
Cellular Localization	Cell membrane
Post-translational Modifications	This protein is not N-glycosylated which is unusual for G-protein-coupled receptors.

St John's Laboratory Ltd

F +44 (0)207 681 2580

T +44 (0)208 223 3081

W <http://www.stjohnslabs.com/>

E info@stjohnslabs.com