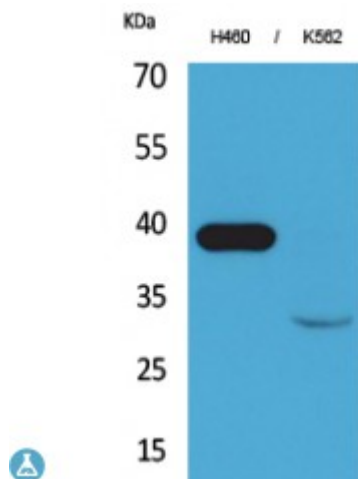


Anti-Cathepsin L antibody



| | |
|-------------------------|---|
| Description | Rabbit polyclonal to Cathepsin L. |
| Model | STJ96489 |
| Host | Rabbit |
| Reactivity | Human |
| Applications | ELISA, IHC, WB |
| Immunogen | Synthesized peptide derived from human Cathepsin L. |
| Immunogen Region | Internal |
| Gene ID | 1514 |
| Gene Symbol | CTSL |
| Dilution range | WB 1:500-1:2000IHC-P 1:100-300ELISA 1:20000 |
| Specificity | Cathepsin L Polyclonal Antibody detects endogenous levels of Cathepsin L protein. |
| Purification | The antibody was affinity-purified from rabbit antiserum by affinity-chromatography using epitope-specific immunogen. |
| Note | For Research Use Only (RUO). |
| Protein Name | Cathepsin L1 Cathepsin L Major excreted protein MEP Cathepsin L1 heavy chain Cathepsin L1 light chain |
| Molecular Weight | 42 kDa |
| Clonality | Polyclonal |
| Conjugation | Unconjugated |

| | |
|------------------------------|---|
| Isotype | IgG |
| Formulation | Liquid in PBS containing 50% glycerol, 0.5% BSA and 0.02% sodium azide. |
| Concentration | 1 mg/ml |
| Storage Instruction | Store at -20°C, and avoid repeat freeze-thaw cycles. |
| Database Links | HGNC:2537OMIM:116880 |
| Alternative Names | Cathepsin L1 Cathepsin L Major excreted protein MEP Cathepsin L1 heavy chain Cathepsin L1 light chain |
| Function | Important for the overall degradation of proteins in lysosomes. |
| Cellular Localization | Lysosome. |

St John's Laboratory Ltd

F +44 (0)207 681 2580
T +44 (0)208 223 3081

W <http://www.stjohnslabs.com/>
E info@stjohnslabs.com