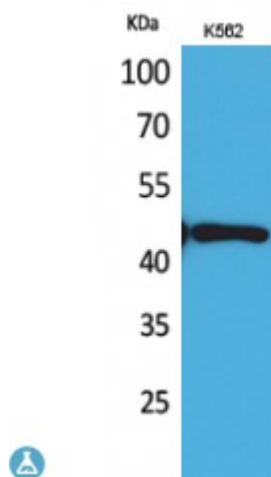


Anti-DR3 antibody



Description	Rabbit polyclonal to DR3.
Model	STJ96500
Host	Rabbit
Reactivity	Human
Applications	ELISA, IHC, WB
Immunogen	Synthesized peptide derived from human DR3
Immunogen Region	230-310 aa, Internal
Gene ID	8718
Gene Symbol	TNFRSF25
Dilution range	WB 1:500-1:2000IHC-P 1:100-300ELISA 1:20000
Specificity	DR3 Polyclonal Antibody detects endogenous levels of DR3 protein.
Tissue Specificity	Abundantly expressed in thymocytes and lymphocytes. Detected in lymphocyte-rich tissues such as thymus, colon, intestine, and spleen. Also found in the prostate.
Purification	The antibody was affinity-purified from rabbit antiserum by affinity-chromatography using epitope-specific immunogen.
Note	For Research Use Only (RUO).
Protein Name	Tumor necrosis factor receptor superfamily member 25 Apo-3 Apoptosis-inducing receptor AIR Apoptosis-mediating receptor DR3 Apoptosis-mediating receptor TRAMP Death receptor 3 Lymphocyte-associated receptor of death