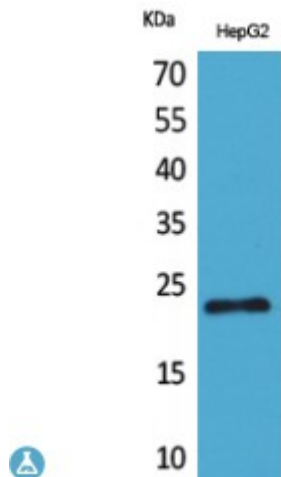


Anti-SNAP 23 antibody



Description	Rabbit polyclonal to SNAP 23.
Model	STJ96596
Host	Rabbit
Reactivity	Human
Applications	ELISA, IHC, WB
Immunogen	Synthesized peptide derived from human SNAP 23.
Immunogen Region	C-terminal
Gene ID	8773
Gene Symbol	SNAP23
Dilution range	WB 1:500-1:2000IHC-P 1:100-300ELISA 1:20000
Specificity	SNAP 23 Polyclonal Antibody detects endogenous levels of SNAP 23 protein.
Tissue Specificity	Ubiquitous. Highest levels where found in placenta.
Purification	The antibody was affinity-purified from rabbit antiserum by affinity-chromatography using epitope-specific immunogen.
Note	For Research Use Only (RUO).
Protein Name	Synaptosomal-associated protein 23 SNAP-23 Vesicle-membrane fusion protein SNAP-23
Molecular Weight	90/25 kDa
Clonality	Polyclonal

Conjugation	Unconjugated
Isotype	IgG
Formulation	Liquid in PBS containing 50% glycerol, 0.5% BSA and 0.02% sodium azide.
Concentration	1 mg/ml
Storage Instruction	Store at -20°C, and avoid repeat freeze-thaw cycles.
Database Links	HGNC:11131OMIM:602534
Alternative Names	Synaptosomal-associated protein 23 SNAP-23 Vesicle-membrane fusion protein SNAP-23
Function	Essential component of the high affinity receptor for the general membrane fusion machinery and an important regulator of transport vesicle docking and fusion.
Cellular Localization	Cell membrane. Peripheral membrane protein. Cell membrane. Lipid-anchor. Cell junction, synapse, synaptosome. Mainly localized to the plasma membrane.

St John's Laboratory Ltd

F +44 (0)207 681 2580

T +44 (0)208 223 3081

W <http://www.stjohnslabs.com/>

E info@stjohnslabs.com