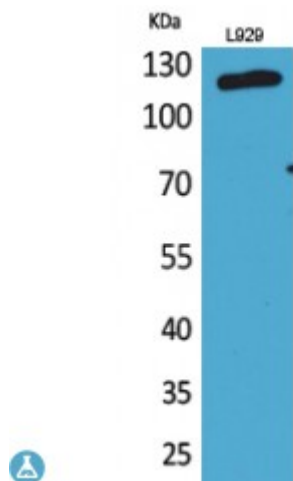


Anti-CD107a antibody



Description	Rabbit polyclonal to CD107a.
Model	STJ96625
Host	Rabbit
Reactivity	Human, Rat
Applications	ELISA, WB
Immunogen	Synthesized peptide derived from human CD107a.
Immunogen Region	211-260 aa, Internal
Gene ID	3916
Gene Symbol	LAMP1
Dilution range	WB 1:500-1:2000ELISA 1:20000
Specificity	CD107a Polyclonal Antibody detects endogenous levels of CD107a protein.
Purification	The antibody was affinity-purified from rabbit antiserum by affinity-chromatography using epitope-specific immunogen.
Note	For Research Use Only (RUO).
Protein Name	Lysosome-associated membrane glycoprotein 1 LAMP-1 Lysosome-associated membrane protein 1 CD107 antigen-like family member A CD antigen CD107a
Molecular Weight	125 kDa
Clonality	Polyclonal
Conjugation	Unconjugated

Isotype	IgG
Formulation	Liquid in PBS containing 50% glycerol, 0.5% BSA and 0.02% sodium azide.
Concentration	1 mg/ml
Storage Instruction	Store at -20°C, and avoid repeat freeze-thaw cycles.
Database Links	HGNC:6499OMIM:153330
Alternative Names	Lysosome-associated membrane glycoprotein 1 LAMP-1 Lysosome-associated membrane protein 1 CD107 antigen-like family member A CD antigen CD107a
Function	Presents carbohydrate ligands to selectins. Also implicated in tumor cell metastasis.; Acts as a receptor for Lassa virus protein.
Cellular Localization	Cell membrane Endosome membrane. Single-pass type I membrane protein Lysosome membrane Late endosome. This protein shuttles between lysosomes, endosomes, and the plasma membrane . Colocalizes with OSBPL1A at the late endosome .
Post-translational Modifications	O- and N-glycosylated; some of the 18 N-linked glycans are polylactosaminoglycans. The glycosylation of N-76 is essential for Lassa virus entry into cells.

St John's Laboratory Ltd

F +44 (0)207 681 2580

T +44 (0)208 223 3081

W <http://www.stjohnslabs.com/>

E info@stjohnslabs.com