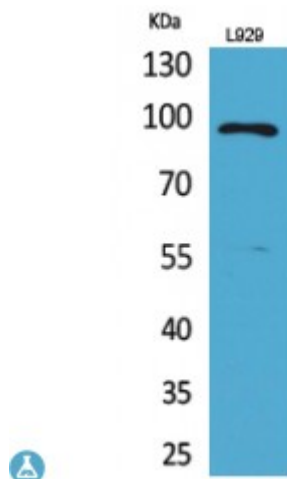


Anti-MACC1 antibody



Description	Rabbit polyclonal to MACC1.
Model	STJ96657
Host	Rabbit
Reactivity	Human, Mouse
Applications	ELISA, WB
Immunogen	Synthesized peptide derived from human MACC1.
Immunogen Region	411-460 aa, Internal
Gene ID	346389
Gene Symbol	MACC1
Dilution range	WB 1:500-1:2000ELISA 1:20000
Specificity	MACC1 Polyclonal Antibody detects endogenous levels of MACC1 protein.
Tissue Specificity	Preferentially expressed in metastasizing tumors.
Purification	The antibody was affinity-purified from rabbit antiserum by affinity-chromatography using epitope-specific immunogen.
Note	For Research Use Only (RUO).
Protein Name	Metastasis-associated in colon cancer protein 1 SH3 domain-containing protein 7a5
Molecular Weight	97 kDa
Clonality	Polyclonal

Conjugation	Unconjugated
Isotype	IgG
Formulation	Liquid in PBS containing 50% glycerol, 0.5% BSA and 0.02% sodium azide.
Concentration	1 mg/ml
Storage Instruction	Store at -20°C, and avoid repeat freeze-thaw cycles.
Database Links	HGNC:30215OMIM:612646
Alternative Names	Metastasis-associated in colon cancer protein 1 SH3 domain-containing protein 7a5
Function	Acts as a transcription activator for MET and as a key regulator of HGF-MET signaling. Promotes cell motility, proliferation and hepatocyte growth factor (HGF)-dependent scattering in vitro and tumor growth and metastasis in vivo.
Cellular Localization	Cytoplasm Nucleus. Mainly found in the cytoplasm in non-metastasizing tumors.

St John's Laboratory Ltd

F +44 (0)207 681 2580

T +44 (0)208 223 3081

W <http://www.stjohnslabs.com/>

E info@stjohnslabs.com