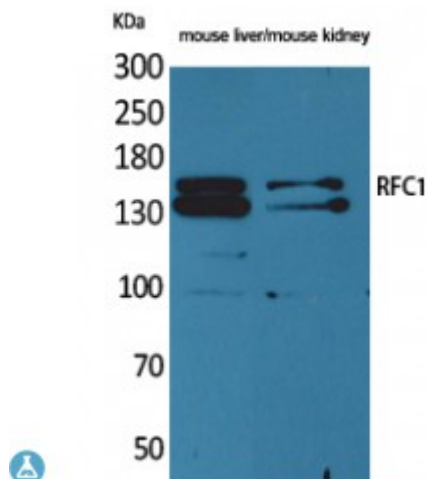


Anti-RFC1 antibody



Description	Rabbit polyclonal to RFC1.
Model	STJ96679
Host	Rabbit
Reactivity	Human, Mouse, Rat
Applications	ELISA, WB
Immunogen	Synthesized peptide derived from human RFC1.
Immunogen Region	Internal
Gene ID	5981
Gene Symbol	RFC1
Dilution range	WB 1:500-1:2000ELISA 1:20000
Specificity	RFC1 Polyclonal Antibody detects endogenous levels of RFC1 protein.
Tissue Specificity	Wide tissue distribution. Undetectable in placental tissue.
Purification	The antibody was affinity-purified from rabbit antiserum by affinity-chromatography using epitope-specific immunogen.
Note	For Research Use Only (RUO).
Protein Name	Replication factor C subunit 1 Activator 1 140 kDa subunit A1 140 kDa subunit Activator 1 large subunit Activator 1 subunit 1 DNA-binding protein PO-GA Replication factor C 140 kDa subunit RF-C 140 kDa subunit