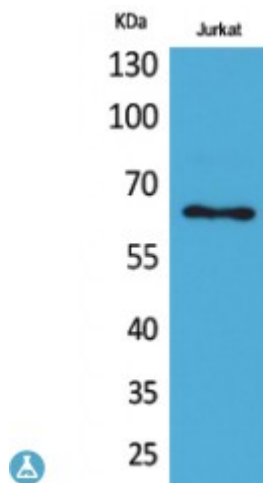


Anti-Keratin-pan antibody



Description	Rabbit polyclonal to Keratin-pan.
Model	STJ96694
Host	Rabbit
Reactivity	Human, Mouse, Rat
Applications	ELISA, IHC, WB
Immunogen	Synthesized peptide derived from human Keratin-pan around the non-acetylation site of K185.
Gene ID	3849
Gene Symbol	KRT2
Dilution range	WB 1:500-1:2000IHC-P 1:100-1:300ELISA 1:20000
Specificity	Keratin-pan Polyclonal Antibody detects endogenous levels of Keratin-pan protein.
Tissue Specificity	Expressed in the upper spinous and granular suprabasal layers of normal adult epidermal tissues from most body sites including thigh, breast nipple, foot sole, penile shaft and axilla. Not present in foreskin, squamous metaplasias and carcinomas. Expression in hypertrophic and keloid scars begins in the deepest suprabasal layer. Weakly expressed in normal gingiva and tongue, however expression is induced in benign keratoses of lingual mucosa and in mild-to-moderate oral dysplasia with orthokeratinization.
Purification	The antibody was affinity-purified from rabbit antiserum by affinity-chromatography using epitope-specific immunogen.
Note	For Research Use Only (RUO).

Protein Name	Keratin, type II cytoskeletal 2 epidermal Cytokeratin-2e CK-2e Epithelial keratin-2e Keratin-2 epidermis Keratin-2e K2e Type-II keratin Kb2
Molecular Weight	65 kDa
Clonality	Polyclonal
Conjugation	Unconjugated
Isotype	IgG
Formulation	Liquid in PBS containing 50% glycerol, 0.5% BSA and 0.02% sodium azide.
Concentration	1 mg/ml
Storage Instruction	Store at -20°C, and avoid repeat freeze-thaw cycles.
Database Links	HGNC:6439 OMIM:146800
Alternative Names	Keratin, type II cytoskeletal 2 epidermal Cytokeratin-2e CK-2e Epithelial keratin-2e Keratin-2 epidermis Keratin-2e K2e Type-II keratin Kb2
Function	Probably contributes to terminal cornification. Associated with keratinocyte activation, proliferation and keratinization.

St John's Laboratory Ltd

F +44 (0)207 681 2580

T +44 (0)208 223 3081

W <http://www.stjohnslabs.com/>

E info@stjohnslabs.com