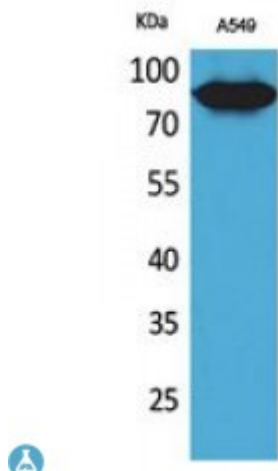


Anti-CD10 antibody



Description	Rabbit polyclonal to CD10.
Model	STJ96715
Host	Rabbit
Reactivity	Human, Mouse, Rat
Applications	ELISA, IHC, WB
Immunogen	Synthesized peptide derived from human CD10.
Immunogen Region	491-540 aa, Internal
Gene ID	4311
Gene Symbol	MME
Dilution range	WB 1:500-1:2000IHC-P 1:100-1:300ELISA 1:20000
Specificity	CD10 Polyclonal Antibody detects endogenous levels of CD10 protein.
Purification	The antibody was affinity-purified from rabbit antiserum by affinity-chromatography using epitope-specific immunogen.
Note	For Research Use Only (RUO).
Protein Name	Neprilysin Atriopeptidase Common acute lymphocytic leukemia antigen CALLA Enkephalinase Neutral endopeptidase 24.11 NEP Neutral endopeptidase Skin fibroblast elastase SFE CD antigen CD10
Molecular Weight	85 kDa
Clonality	Polyclonal
Conjugation	Unconjugated

Isotype	IgG
Formulation	Liquid in PBS containing 50% glycerol, 0.5% BSA and 0.02% sodium azide.
Concentration	1 mg/ml
Storage Instruction	Store at -20°C, and avoid repeat freeze-thaw cycles.
Database Links	HGNC:7154 OMIM:120520
Alternative Names	Neprilysin Atriopeptidase Common acute lymphocytic leukemia antigen CALLA Enkephalinase Neutral endopeptidase 24.11 NEP Neutral endopeptidase Skin fibroblast elastase SFE CD antigen CD10
Function	Thermolysin-like specificity, but is almost confined on acting on polypeptides of up to 30 amino acids . Biologically important in the destruction of opioid peptides such as Met- and Leu-enkephalins by cleavage of a Gly-Phe bond . Able to cleave angiotensin-1, angiotensin-2 and angiotensin 1-9 . Involved in the degradation of atrial natriuretic factor (ANF) . Displays UV-inducible elastase activity toward skin preelastic and elastic fibers .
Cellular Localization	Cell membrane. Single-pass type II membrane protein.
Post-translational Modifications	Myristoylation is a determinant of membrane targeting. Glycosylation at Asn-628 is necessary both for surface expression and neutral endopeptidase activity.

St John's Laboratory Ltd

F +44 (0)207 681 2580

T +44 (0)208 223 3081

W <http://www.stjohnslabs.com/>

E info@stjohnslabs.com