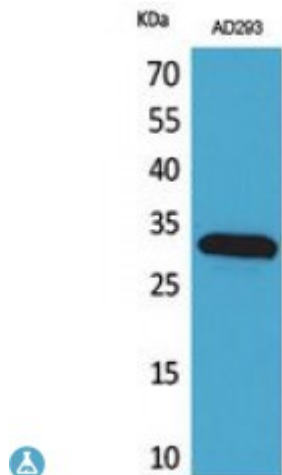


Anti-Bag-1 antibody



Description	Rabbit polyclonal to Bag-1.
Model	STJ96725
Host	Rabbit
Reactivity	Human
Applications	ELISA, WB
Immunogen	Synthesized peptide derived from human Bag-1.
Immunogen Region	Internal
Gene ID	573
Gene Symbol	BAG1
Dilution range	WB 1:500-1:2000ELISA 1:20000
Specificity	Bag-1 Polyclonal Antibody detects endogenous levels of Bag-1 protein.
Purification	The antibody was affinity-purified from rabbit antiserum by affinity-chromatography using epitope-specific immunogen.
Note	For Research Use Only (RUO).
Protein Name	BAG family molecular chaperone regulator 1 BAG-1 Bcl-2-associated athanogene 1
Molecular Weight	35 kDa
Clonality	Polyclonal
Conjugation	Unconjugated

Isotype	IgG
Formulation	Liquid in PBS containing 50% glycerol, 0.5% BSA and 0.02% sodium azide.
Concentration	1 mg/ml
Storage Instruction	Store at -20°C, and avoid repeat freeze-thaw cycles.
Database Links	HGNC:9370MIM:601497
Alternative Names	BAG family molecular chaperone regulator 1 BAG-1 Bcl-2-associated athanogene 1

St John's Laboratory Ltd

F +44 (0)207 681 2580

T +44 (0)208 223 3081

W <http://www.stjohnslabs.com/>

E info@stjohnslabs.com