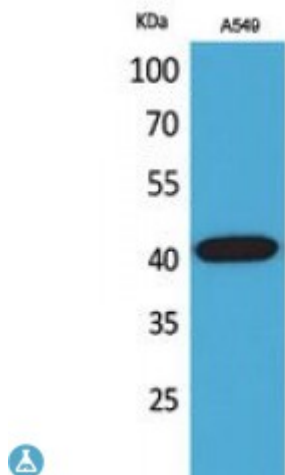


Anti-L-Selectin antibody



Description	Rabbit polyclonal to L-Selectin.
Model	STJ96735
Host	Rabbit
Reactivity	Human, Mouse, Rat
Applications	ELISA, WB
Immunogen	Synthesized peptide derived from human L-Selectin.
Immunogen Region	Internal
Gene ID	6402
Gene Symbol	SELL
Dilution range	WB 1:500-1:2000ELISA 1:20000
Specificity	L-Selectin Polyclonal Antibody detects endogenous levels of L-Selectin protein.
Purification	The antibody was affinity-purified from rabbit antiserum by affinity-chromatography using epitope-specific immunogen.
Note	For Research Use Only (RUO).
Protein Name	L-selectin CD62 antigen-like family member L Leukocyte adhesion molecule 1 LAM-1 Leukocyte surface antigen Leu-8 Leukocyte-endothelial cell adhesion molecule 1 LECAM1 Lymph node homing receptor TQ1 gp9
Molecular Weight	42 kDa
Clonality	Polyclonal

Conjugation	Unconjugated
Isotype	IgG
Formulation	Liquid in PBS containing 50% glycerol, 0.5% BSA and 0.02% sodium azide.
Concentration	1 mg/ml
Storage Instruction	Store at -20°C, and avoid repeat freeze-thaw cycles.
Database Links	HGNC:107200MIM:153240
Alternative Names	L-selectin CD62 antigen-like family member L Leukocyte adhesion molecule 1 LAM-1 Leukocyte surface antigen Leu-8 Leukocyte-endothelial cell adhesion molecule 1 LECAM1 Lymph node homing receptor TQ1 gp9

St John's Laboratory Ltd

F +44 (0)207 681 2580

T +44 (0)208 223 3081

W <http://www.stjohnslabs.com/>

E info@stjohnslabs.com