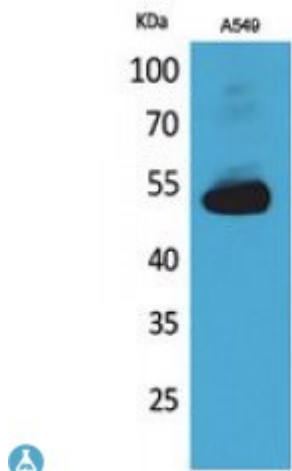


## Anti-Annexin VII antibody



<b>Description</b>	Rabbit polyclonal to Annexin VII.
<b>Model</b>	STJ96738
<b>Host</b>	Rabbit
<b>Reactivity</b>	Human, Mouse
<b>Applications</b>	ELISA, IHC, WB
<b>Immunogen</b>	Synthesized peptide derived from human Annexin VII.
<b>Immunogen Region</b>	271-320 aa, Internal
<b>Gene ID</b>	<a href="#">310</a>
<b>Gene Symbol</b>	<a href="#">ANXA7</a>
<b>Dilution range</b>	WB 1:500-1:2000IHC-P 1:100-1:300ELISA 1:20000
<b>Specificity</b>	Annexin VII Polyclonal Antibody detects endogenous levels of Annexin VII protein.
<b>Tissue Specificity</b>	Isoform 1 is expressed in brain, heart and skeletal muscle. Isoform 2 is more abundant in liver, lung, kidney, spleen, fibroblasts and placenta.
<b>Purification</b>	The antibody was affinity-purified from rabbit antiserum by affinity-chromatography using epitope-specific immunogen.
<b>Note</b>	For Research Use Only (RUO).
<b>Protein Name</b>	Annexin A7 Annexin VII Annexin-7 Synexin
<b>Molecular Weight</b>	53 kDa
<b>Clonality</b>	Polyclonal

<b>Conjugation</b>	Unconjugated
<b>Isotype</b>	IgG
<b>Formulation</b>	Liquid in PBS containing 50% glycerol, 0.5% BSA and 0.02% sodium azide.
<b>Concentration</b>	1 mg/ml
<b>Storage Instruction</b>	Store at -20°C, and avoid repeat freeze-thaw cycles.
<b>Database Links</b>	<a href="#">HGNC:545OMIM:186360</a>
<b>Alternative Names</b>	Annexin A7 Annexin VII Annexin-7 Synexin
<b>Function</b>	Calcium/phospholipid-binding protein which promotes membrane fusion and is involved in exocytosis.
<b>Sequence and Domain Family</b>	A pair of annexin repeats may form one binding site for calcium and phospholipid.

---

**St John's Laboratory Ltd**

**F** +44 (0)207 681 2580

**T** +44 (0)208 223 3081

**W** <http://www.stjohnslabs.com/>

**E** [info@stjohnslabs.com](mailto:info@stjohnslabs.com)