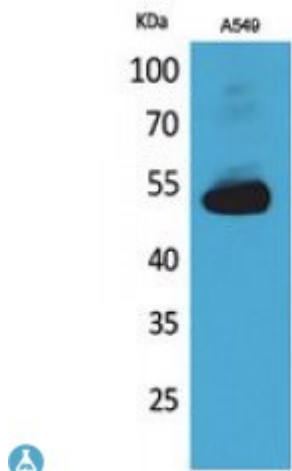


Anti-Annexin VII antibody



Description	Rabbit polyclonal to Annexin VII.
Model	STJ96738
Host	Rabbit
Reactivity	Human, Mouse
Applications	ELISA, IHC, WB
Immunogen	Synthesized peptide derived from human Annexin VII.
Immunogen Region	271-320 aa, Internal
Gene ID	310
Gene Symbol	ANXA7
Dilution range	WB 1:500-1:2000IHC-P 1:100-1:300ELISA 1:20000
Specificity	Annexin VII Polyclonal Antibody detects endogenous levels of Annexin VII protein.
Tissue Specificity	Isoform 1 is expressed in brain, heart and skeletal muscle. Isoform 2 is more abundant in liver, lung, kidney, spleen, fibroblasts and placenta.
Purification	The antibody was affinity-purified from rabbit antiserum by affinity-chromatography using epitope-specific immunogen.
Note	For Research Use Only (RUO).
Protein Name	Annexin A7 Annexin VII Annexin-7 Synexin
Molecular Weight	53 kDa
Clonality	Polyclonal

Conjugation	Unconjugated
Isotype	IgG
Formulation	Liquid in PBS containing 50% glycerol, 0.5% BSA and 0.02% sodium azide.
Concentration	1 mg/ml
Storage Instruction	Store at -20°C, and avoid repeat freeze-thaw cycles.
Database Links	HGNC:545OMIM:186360
Alternative Names	Annexin A7 Annexin VII Annexin-7 Synexin
Function	Calcium/phospholipid-binding protein which promotes membrane fusion and is involved in exocytosis.
Sequence and Domain Family	A pair of annexin repeats may form one binding site for calcium and phospholipid.

St John's Laboratory Ltd

F +44 (0)207 681 2580

T +44 (0)208 223 3081

W <http://www.stjohnslabs.com/>

E info@stjohnslabs.com