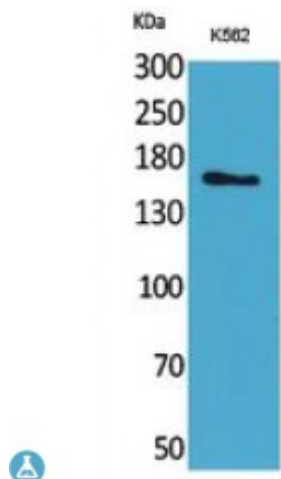


Anti-Laminin gamma-2 antibody



Description	Rabbit polyclonal to Laminin gamma-2.
Model	STJ96744
Host	Rabbit
Reactivity	Human, Rat
Applications	ELISA, IHC, WB
Immunogen	Synthesized peptide derived from human Laminin gamma-2.
Immunogen Region	C-terminal
Gene ID	3918
Gene Symbol	LAMC2
Dilution range	WB 1:500-1:2000IHC-P 1:100-1:300ELISA 1:20000
Specificity	Laminin gamma-2 Polyclonal Antibody detects endogenous levels of Laminin gamma-2 protein.
Tissue Specificity	The large variant is expressed only in specific epithelial cells of embryonic and neonatal tissues. In 17-week old embryo the small variant is found in cerebral cortex, lung, and distal tubes of kidney, but not in epithelia except for distal tubuli.
Purification	The antibody was affinity-purified from rabbit antiserum by affinity-chromatography using epitope-specific immunogen.
Note	For Research Use Only (RUO).
Protein Name	Laminin subunit gamma-2 Cell-scattering factor 140 kDa subunit CSF 140 kDa subunit Epiligrin subunit gamma Kalinin subunit gamma

Kalinin/nicein/epiligrin 100 kDa subunit Ladsin 140 kDa subunit Laminin B2t
chain