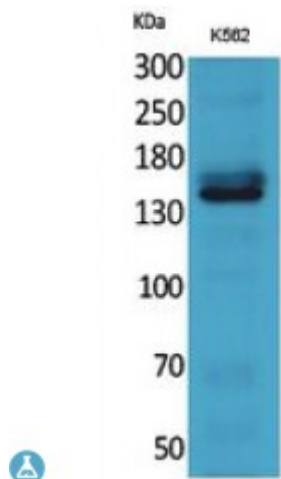


Anti-RFC1 antibody



Description	Rabbit polyclonal to RFC1.
Model	STJ96750
Host	Rabbit
Reactivity	Human
Applications	ELISA, IHC, WB
Immunogen	Synthesized peptide derived from human RFC1.
Immunogen Region	1071-1120 aa, C-terminal
Gene ID	5981
Gene Symbol	RFC1
Dilution range	WB 1:500-1:2000IHC-P 1:100-1:300ELISA 1:20000
Specificity	RFC1 Polyclonal Antibody detects endogenous levels of RFC1 protein.
Tissue Specificity	Wide tissue distribution. Undetectable in placental tissue.
Purification	The antibody was affinity-purified from rabbit antiserum by affinity-chromatography using epitope-specific immunogen.
Note	For Research Use Only (RUO).
Protein Name	Replication factor C subunit 1 Activator 1 140 kDa subunit A1 140 kDa subunit Activator 1 large subunit Activator 1 subunit 1 DNA-binding protein PO-GA Replication factor C 140 kDa subunit RF-C 140 kDa subunit