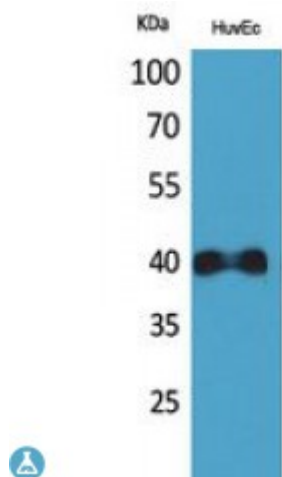


Anti-IL8 beta antibody



Description	Rabbit polyclonal to IL8Rbeta.
Model	STJ96762
Host	Rabbit
Reactivity	Human
Applications	ELISA, IHC, WB
Immunogen	Synthesized peptide derived from human IL-8Rbeta.
Immunogen Region	1-50 aa, N-terminal
Gene ID	3579
Gene Symbol	CXCR2
Dilution range	WB 1:500-1:2000IHC-P 1:100-1:300ELISA 1:20000
Specificity	IL-8Rbeta Polyclonal Antibody detects endogenous levels of IL-8Rbeta protein.
Purification	The antibody was affinity-purified from rabbit antiserum by affinity-chromatography using epitope-specific immunogen.
Note	For Research Use Only (RUO).
Protein Name	C-X-C chemokine receptor type 2 CXC-R2 CXCR-2 CDw128b GRO/MGSA receptor High affinity interleukin-8 receptor B IL-8R B IL-8 receptor type 2 CD antigen CD182
Molecular Weight	40 kDa
Clonality	Polyclonal

Conjugation	Unconjugated
Isotype	IgG
Formulation	Liquid in PBS containing 50% glycerol, 0.5% BSA and 0.02% sodium azide.
Concentration	1 mg/ml
Storage Instruction	Store at -20°C, and avoid repeat freeze-thaw cycles.
Database Links	HGNC:60270MIM:146928
Alternative Names	C-X-C chemokine receptor type 2 CXC-R2 CXCR-2 CDw128b GRO/MGSA receptor High affinity interleukin-8 receptor B IL-8R B IL-8 receptor type 2 CD antigen CD182
Function	Receptor for interleukin-8 which is a powerful neutrophil chemotactic factor. Binding of IL-8 to the receptor causes activation of neutrophils. This response is mediated via a G-protein that activates a phosphatidylinositol-calcium second messenger system. Binds to IL-8 with high affinity. Also binds with high affinity to CXCL3, GRO/MGSA and NAP-2.
Cellular Localization	Cell membrane. Multi-pass membrane protein.
Post-translational Modifications	Phosphorylated upon ligand binding; which is required for desensitization.

St John's Laboratory Ltd

F +44 (0)207 681 2580

T +44 (0)208 223 3081

W <http://www.stjohnslabs.com/>

E info@stjohnslabs.com