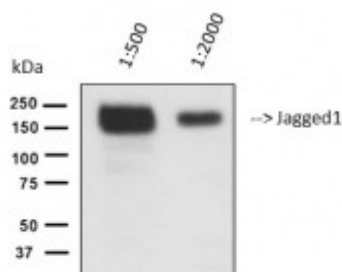


Anti-Jagged1 antibody



Western Blot (WB) analysis of HeLa cells using Jagged1 Antibody (STJ96766).



Description

Jagged1 is a protein encoded by the JAG1 gene which is approximately 133,7 kDa. Jagged1 is localised to the plasma membrane. It is involved in signalling by Notch1, Notch2 activation and transmission of signal to the nucleus and the HIV life cycle. It is a ligand for multiple Notch receptors and may also be involved in cell-fate decisions during hematopoiesis and in the early and late stages of mammalian cardiovascular development. Jagged1 is widely expressed in adult and foetal tissues. Mutations in the JAG1 gene may result in Alagille syndrome. STJ96766 was affinity-purified from rabbit antiserum by affinity-chromatography using epitope-specific immunogen. This polyclonal antibody detects endogenous levels of Jagged1 protein.

Model	STJ96766
Host	Rabbit
Reactivity	Human, Mouse, Rat
Applications	ELISA, IHC, WB
Immunogen	Synthesized peptide derived from human Jagged1.
Immunogen Region	981-1030 aa, Internal
Gene ID	182
Gene Symbol	JAG1
Dilution range	WB 1:500-1:2000 IHC-P 1:100-1:300 ELISA 1:20000
Specificity	Jagged1 Polyclonal Antibody detects endogenous levels of Jagged1 protein.
Tissue Specificity	Widely expressed in adult and fetal tissues. In cervix epithelium expressed in undifferentiated subcolumnar reserve cells and squamous metaplasia.

Expression is up-regulated in cervical squamous cell carcinoma. Expressed in bone marrow cell line HS-27a which supports the long-term maintenance of immature progenitor cells.

Purification	The antibody was affinity-purified from rabbit antiserum by affinity-chromatography using epitope-specific immunogen.
Note	For Research Use Only (RUO).
Protein Name	Protein jagged-1 Jagged1 hJ1 CD antigen CD339
Molecular Weight	140 kDa
Clonality	Polyclonal
Conjugation	Unconjugated
Isotype	IgG
Formulation	Liquid in PBS containing 50% glycerol, 0.5% BSA and 0.02% sodium azide.
Concentration	1 mg/ml
Storage Instruction	Store at -20°C, and avoid repeat freeze-thaw cycles.
Database Links	HGNC:6188OMIM:118450
Alternative Names	Protein jagged-1 Jagged1 hJ1 CD antigen CD339
Function	Ligand for multiple Notch receptors and involved in the mediation of Notch signaling. May be involved in cell-fate decisions during hematopoiesis. Seems to be involved in early and late stages of mammalian cardiovascular development. Inhibits myoblast differentiation . Enhances fibroblast growth factor-induced angiogenesis (in vitro).
Sequence and Domain Family	The second EGF-like domain is atypical.
Cellular Localization	Membrane. Single-pass type I membrane protein.