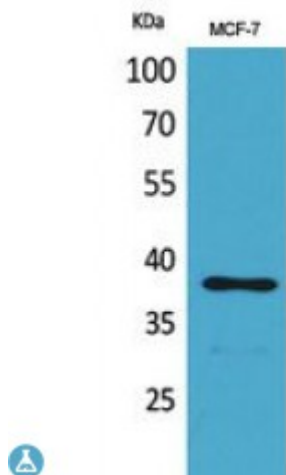


Anti-THPO antibody



| | |
|-------------------------|---|
| Description | Rabbit polyclonal to THPO. |
| Model | STJ96778 |
| Host | Rabbit |
| Reactivity | Human |
| Applications | ELISA, IHC, WB |
| Immunogen | Synthesized peptide derived from human THPO. |
| Immunogen Region | 41-90 aa, Internal |
| Gene ID | 7066 |
| Gene Symbol | THPO |
| Dilution range | WB 1:500-1:2000IHC-P 1:100-1:300ELISA 1:20000 |
| Specificity | THPO Polyclonal Antibody detects endogenous levels of THPO protein. |
| Purification | The antibody was affinity-purified from rabbit antiserum by affinity-chromatography using epitope-specific immunogen. |
| Note | For Research Use Only (RUO). |
| Protein Name | Thrombopoietin C-mpl ligand ML Megakaryocyte colony-stimulating factor Megakaryocyte growth and development factor MGDF Myeloproliferative leukemia virus oncogene ligand |
| Molecular Weight | 38 kDa |
| Clonality | Polyclonal |
| Conjugation | Unconjugated |

| | |
|-----------------------------------|--|
| Isotype | IgG |
| Formulation | Liquid in PBS containing 50% glycerol, 0.5% BSA and 0.02% sodium azide. |
| Concentration | 1 mg/ml |
| Storage Instruction | Store at -20°C, and avoid repeat freeze-thaw cycles. |
| Database Links | HGNC:11795 OMIM:187950 |
| Alternative Names | Thrombopoietin C-mpl ligand ML Megakaryocyte colony-stimulating factor Megakaryocyte growth and development factor MGDF Myeloproliferative leukemia virus oncogene ligand |
| Function | Lineage-specific cytokine affecting the proliferation and maturation of megakaryocytes from their committed progenitor cells. It acts at a late stage of megakaryocyte development. It may be the major physiological regulator of circulating platelets. |
| Sequence and Domain Family | Two-domain structure with an erythropoietin-like N-terminal and a Ser/Pro/Thr-rich C-terminal. |
| Cellular Localization | Secreted. |

St John's Laboratory Ltd

F +44 (0)207 681 2580

T +44 (0)208 223 3081

W <http://www.stjohnslabs.com/>

E info@stjohnslabs.com