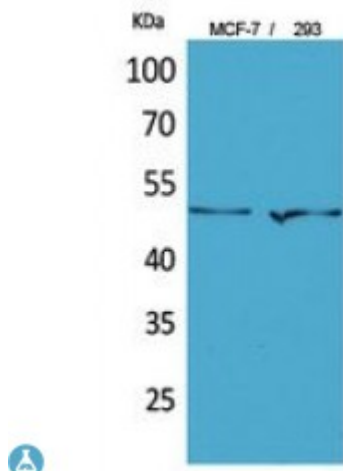


Anti-PD-ECGF antibody



Description	Rabbit polyclonal to PD-ECGF.
Model	STJ96779
Host	Rabbit
Reactivity	Human
Applications	ELISA, IHC, WB
Immunogen	Synthesized peptide derived from human PD-ECGF.
Immunogen Region	1-50 aa, N-terminal
Gene ID	1890
Gene Symbol	TYMP
Dilution range	WB 1:500-1:2000IHC-P 1:100-1:300ELISA 1:20000
Specificity	PD-ECGF Polyclonal Antibody detects endogenous levels of PD-ECGF protein.
Purification	The antibody was affinity-purified from rabbit antiserum by affinity-chromatography using epitope-specific immunogen.
Note	For Research Use Only (RUO).
Protein Name	Thymidine phosphorylase TP Gliostatin Platelet-derived endothelial cell growth factor PD-ECGF TdRPase
Molecular Weight	50 kDa
Clonality	Polyclonal
Conjugation	Unconjugated

Isotype	IgG
Formulation	Liquid in PBS containing 50% glycerol, 0.5% BSA and 0.02% sodium azide.
Concentration	1 mg/ml
Storage Instruction	Store at -20°C, and avoid repeat freeze-thaw cycles.
Database Links	HGNC:3148OMIM:131222
Alternative Names	Thymidine phosphorylase TP Gliostatin Platelet-derived endothelial cell growth factor PD-ECGF TdRPase
Function	May have a role in maintaining the integrity of the blood vessels. Has growth promoting activity on endothelial cells, angiogenic activity in vivo and chemotactic activity on endothelial cells in vitro. Catalyzes the reversible phosphorolysis of thymidine. The produced molecules are then utilized as carbon and energy sources or in the rescue of pyrimidine bases for nucleotide synthesis.

St John's Laboratory Ltd

F +44 (0)207 681 2580

T +44 (0)208 223 3081

W <http://www.stjohnslabs.com/>

E info@stjohnslabs.com