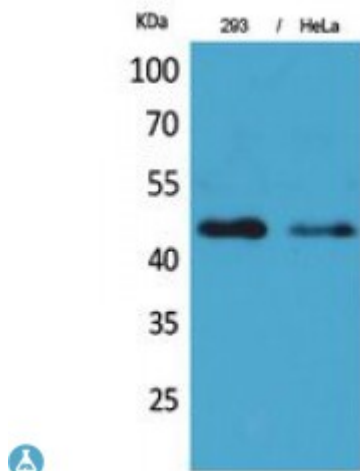


## Anti-IDH1 antibody



<b>Description</b>	Rabbit polyclonal to IDH1.
<b>Model</b>	STJ96781
<b>Host</b>	Rabbit
<b>Reactivity</b>	Human, Mouse, Rat
<b>Applications</b>	ELISA, IHC, WB
<b>Immunogen</b>	Synthesized peptide derived from human IDH1.
<b>Immunogen Region</b>	N-terminal
<b>Gene ID</b>	<a href="#">3417</a>
<b>Gene Symbol</b>	<a href="#">IDH1</a>
<b>Dilution range</b>	WB 1:500-1:2000IHC-P 1:100-1:300ELISA 1:20000
<b>Specificity</b>	IDH1 Polyclonal Antibody detects endogenous levels of IDH1 protein.
<b>Purification</b>	The antibody was affinity-purified from rabbit antiserum by affinity-chromatography using epitope-specific immunogen.
<b>Note</b>	For Research Use Only (RUO).
<b>Protein Name</b>	Isocitrate dehydrogenase NADP cytoplasmic IDH Cytosolic NADP-isocitrate dehydrogenase IDP NADP +-specific ICDH Oxalosuccinate decarboxylase
<b>Molecular Weight</b>	46.659 kDa
<b>Clonality</b>	Polyclonal
<b>Conjugation</b>	Unconjugated

<b>Isotype</b>	IgG
<b>Formulation</b>	Liquid in PBS containing 50% glycerol, 0.5% BSA and 0.02% sodium azide.
<b>Concentration</b>	1 mg/ml
<b>Storage Instruction</b>	Store at -20°C, and avoid repeat freeze-thaw cycles.
<b>Database Links</b>	<a href="#">HGNC:5382OMIM:137800</a>
<b>Alternative Names</b>	Isocitrate dehydrogenase NADP cytoplasmic IDH Cytosolic NADP-isocitrate dehydrogenase IDP NADP +-specific ICDH Oxalosuccinate decarboxylase
<b>Cellular Localization</b>	Cytoplasm Peroxisome
<b>Post-translational Modifications</b>	Acetylation at Lys-374 dramatically reduces catalytic activity.

---

**St John's Laboratory Ltd**

**F** +44 (0)207 681 2580  
**T** +44 (0)208 223 3081

**W** <http://www.stjohnslabs.com/>  
**E** [info@stjohnslabs.com](mailto:info@stjohnslabs.com)