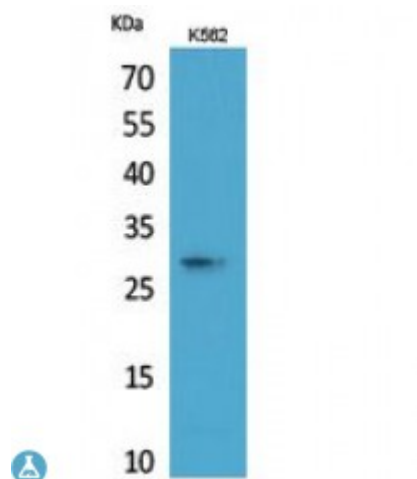


## Anti-ApoA-I antibody



|                           |  |
|---------------------------|--|
| <b>Description</b>        | Rabbit polyclonal to ApoA-I.   |
| <b>Model</b>              | STJ96804   |
| <b>Host</b>               | Rabbit   |
| <b>Reactivity</b>         | Human, Mouse   |
| <b>Applications</b>       | ELISA, IHC, WB   |
| <b>Immunogen</b>          | Synthesized peptide derived from human ApoA-I.   |
| <b>Immunogen Region</b>   | 81-130 aa, Internal  |
| <b>Gene ID</b>            | <a href="#">335</a>  |
| <b>Gene Symbol</b>        | <a href="#">APOA1</a>  |
| <b>Dilution range</b>     | WB 1:500-1:2000IHC-P 1:100-1:300ELISA 1:20000  |
| <b>Specificity</b>        | ApoA-I Polyclonal Antibody detects endogenous levels of ApoA-I protein.  |
| <b>Tissue Specificity</b> | Major protein of plasma HDL, also found in chylomicrons. Synthesized in the liver and small intestine. The oxidized form at Met-110 and Met-136 is increased in individuals with increased risk for coronary artery disease, such as in carrier of the eNOSa/b genotype and exposure to cigarette smoking. It is also present in increased levels in aortic lesions relative to native ApoA-I and increased levels are seen with increasing severity of disease. |
| <b>Purification</b>       | The antibody was affinity-purified from rabbit antiserum by affinity-chromatography using epitope-specific immunogen.  |
| <b>Note</b>               | For Research Use Only (RUO).   |
| <b>Protein Name</b>       | Apolipoprotein A-I Apo-AI ApoA-I Apolipoprotein A1 Proapolipoprotein A-I   |

|   |   |
|---|---|
|   | ProapoA-I Truncated apolipoprotein A-I Apolipoprotein A-I 1-242   |
| <b>Molecular Weight</b>                 | 31 kDa  |
| <b>Clonality</b>                        | Polyclonal  |
| <b>Conjugation</b>                      | Unconjugated  |
| <b>Isotype</b>                          | IgG   |
| <b>Formulation</b>                      | Liquid in PBS containing 50% glycerol, 0.5% BSA and 0.02% sodium azide.   |
| <b>Concentration</b>                    | 1 mg/ml   |
| <b>Storage Instruction</b>              | Store at -20°C, and avoid repeat freeze-thaw cycles.  |
| <b>Database Links</b>                   | <a href="https://www.ncbi.nlm.nih.gov/Protein/6000MIM:105200">HGNC:6000MIM:105200</a>   |
| <b>Alternative Names</b>                | Apolipoprotein A-I Apo-AI ApoA-I Apolipoprotein A1 Proapolipoprotein A-I ProapoA-I Truncated apolipoprotein A-I Apolipoprotein A-I 1-242  |
| <b>Function</b>                         | Participates in the reverse transport of cholesterol from tissues to the liver for excretion by promoting cholesterol efflux from tissues and by acting as a cofactor for the lecithin cholesterol acyltransferase (LCAT). As part of the SPAP complex, activates spermatozoa motility. |
| <b>Cellular Localization</b>            | Secreted.   |
| <b>Post-translational Modifications</b> | Glycosylated. Palmitoylated. Phosphorylation sites are present in the extracellular medium.   |