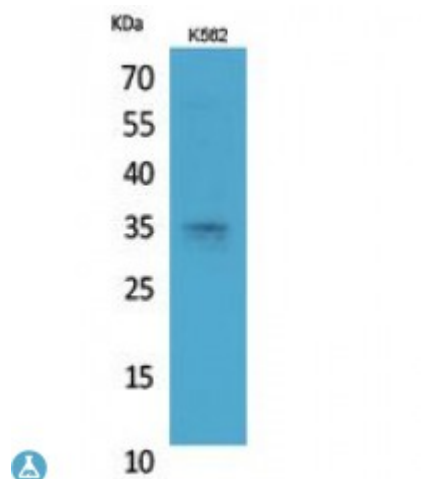


Anti-Syntaxin 1 antibody



Description	Rabbit polyclonal to Syntaxin 1.
Model	STJ96805
Host	Rabbit
Reactivity	Human, Mouse, Rat
Applications	ELISA, IHC, WB
Immunogen	Synthesized peptide derived from human Syntaxin 1.
Immunogen Region	31-80 aa, Internal
Gene ID	6804
Gene Symbol	STX1A
Dilution range	WB 1:500-1:2000IHC-P 1:100-1:300ELISA 1:20000
Specificity	Syntaxin 1 Polyclonal Antibody detects endogenous levels of Syntaxin 1 protein.
Tissue Specificity	Isoform 1 is highly expressed in embryonic spinal chord and ganglia and in adult cerebellum and cerebral cortex. Isoform 2 is expressed in heart, liver, fat, skeletal muscle, kidney and brain.
Purification	The antibody was affinity-purified from rabbit antiserum by affinity-chromatography using epitope-specific immunogen.
Note	For Research Use Only (RUO).
Protein Name	Syntaxin-1A Neuron-specific antigen HPC-1
Molecular Weight	35 kDa

Clonality	Polyclonal
Conjugation	Unconjugated
Isotype	IgG
Formulation	Liquid in PBS containing 50% glycerol, 0.5% BSA and 0.02% sodium azide.
Concentration	1 mg/ml
Storage Instruction	Store at -20°C, and avoid repeat freeze-thaw cycles.
Database Links	HGNC:11433OMIM:186590
Alternative Names	Syntaxin-1A Neuron-specific antigen HPC-1
Function	Plays a role in hormone and neurotransmitter exocytosis . Potentially involved in docking of synaptic vesicles at presynaptic active zones. May mediate Ca(2+)-regulation of exocytosis acrosomal reaction in sperm.
Cellular Localization	Cytoplasmic vesicle, secretory vesicle, synaptic vesicle membrane Cell junction, synapse, synaptosome Cell membrane. Colocalizes with KCNB1 at the cell membrane. Isoform 2: Secreted
Post-translational Modifications	Phosphorylated by CK2 . Phosphorylation at Ser-188 by DAPK1 significantly decreases its interaction with STXBP1.

St John's Laboratory Ltd

F +44 (0)207 681 2580

T +44 (0)208 223 3081

W <http://www.stjohnslabs.com/>

E info@stjohnslabs.com