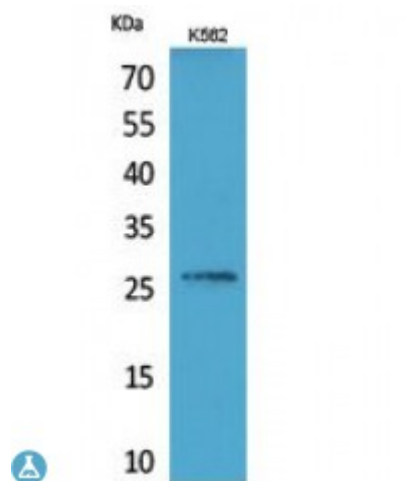


Anti-FGF-16 antibody



Description	Rabbit polyclonal to FGF-16.
Model	STJ96806
Host	Rabbit
Reactivity	Human, Mouse, Rat
Applications	ELISA, IHC, WB
Immunogen	Synthesized peptide derived from human FGF-16.
Immunogen Region	Internal
Gene ID	8823
Gene Symbol	FGF16
Dilution range	WB 1:500-1:2000IHC-P 1:100-1:300ELISA 1:20000
Specificity	FGF-16 Polyclonal Antibody detects endogenous levels of FGF-16 protein.
Purification	The antibody was affinity-purified from rabbit antiserum by affinity-chromatography using epitope-specific immunogen.
Note	For Research Use Only (RUO).
Protein Name	Fibroblast growth factor 16 FGF-16
Molecular Weight	24 kDa
Clonality	Polyclonal
Conjugation	Unconjugated
Isotype	IgG

Formulation	Liquid in PBS containing 50% glycerol, 0.5% BSA and 0.02% sodium azide.
Concentration	1 mg/ml
Storage Instruction	Store at -20°C, and avoid repeat freeze-thaw cycles.
Database Links	HGNC:3672OMIM:300827
Alternative Names	Fibroblast growth factor 16 FGF-16
Function	Plays an important role in the regulation of embryonic development, cell proliferation and cell differentiation, and is required for normal cardiomyocyte proliferation and heart development.
Cellular Localization	Secreted

St John's Laboratory Ltd

F +44 (0)207 681 2580

T +44 (0)208 223 3081

W <http://www.stjohnslabs.com/>

E info@stjohnslabs.com