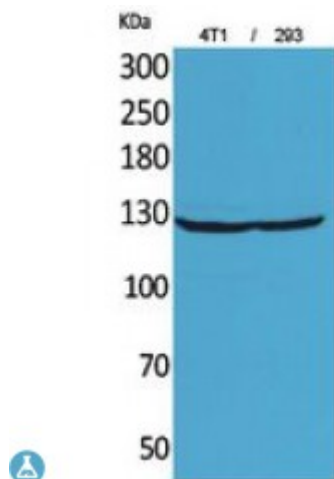


Anti-Integrin alpha antibody



| | |
|---------------------------|--|
| Description | Rabbit polyclonal to Integrin alphaD. |
| Model | STJ96825 |
| Host | Rabbit |
| Reactivity | Human |
| Applications | ELISA, IHC, WB |
| Immunogen | Synthesized peptide derived from human Integrin alphaD. |
| Immunogen Region | 901-950 aa, Internal |
| Gene ID | 3681 |
| Gene Symbol | ITGAD |
| Dilution range | WB 1:500-1:2000IHC-P 1:100-1:300ELISA 1:20000 |
| Specificity | Integrin alphaD Polyclonal Antibody detects endogenous levels of Integrin alphaD protein. |
| Tissue Specificity | Expressed moderately on myelomonocytic cell lines and subsets of peripheral blood leukocytes and strongly on tissue-specialized cells, including macrophages foam cells within atherosclerotic plaques, and on splenic red pulp macrophages. |
| Purification | The antibody was affinity-purified from rabbit antiserum by affinity-chromatography using epitope-specific immunogen. |
| Note | For Research Use Only (RUO). |
| Protein Name | Integrin alpha-D ADB2 CD11 antigen-like family member D Leukointegrin alpha D CD antigen CD11d |

| | |
|-----------------------------------|---|
| Molecular Weight | 127 kDa |
| Clonality | Polyclonal |
| Conjugation | Unconjugated |
| Isotype | IgG |
| Formulation | Liquid in PBS containing 50% glycerol, 0.5% BSA and 0.02% sodium azide. |
| Concentration | 1 mg/ml |
| Storage Instruction | Store at -20°C, and avoid repeat freeze-thaw cycles. |
| Database Links | HGNC:6146OMIM:602453 |
| Alternative Names | Integrin alpha-D ADB2 CD11 antigen-like family member D Leukointegrin alpha D CD antigen CD11d |
| Function | Integrin alpha-D/beta-2 is a receptor for ICAM3 and VCAM1. May play a role in the atherosclerotic process such as clearing lipoproteins from plaques and in phagocytosis of blood-borne pathogens, particulate matter, and senescent erythrocytes from the blood. |
| Sequence and Domain Family | The integrin I-domain (insert) is a VWFA domain. Integrins with I-domains do not undergo protease cleavage. |
| Cellular Localization | Membrane. Single-pass type I membrane protein. |